

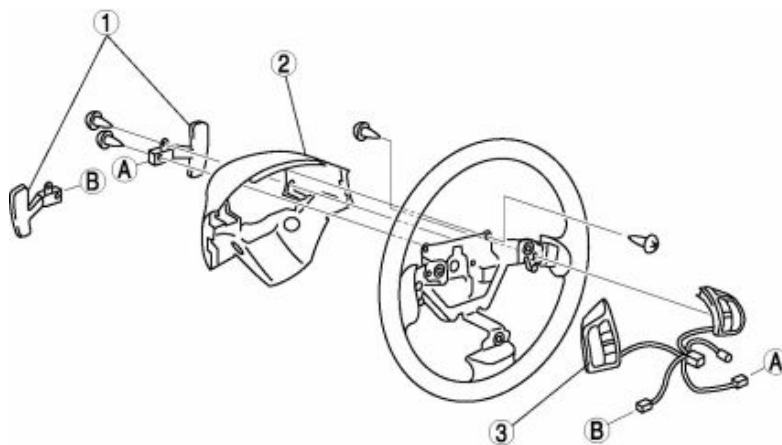
AUDIO CONTROL SWITCH

AUDIO CONTROL SWITCH REMOVAL/INSTALLATION

NOTE:

For vehicles with the cruise control system, the audio control switch harness and the cruise control switch harness are united, therefore they cannot be separated.

1. Disconnect the negative battery cable.
2. Remove the driver-side air bag module.(See DRIVER-SIDE AIR BAG MODULE REMOVAL/INSTALLATION .)
3. Remove the steering wheel.(See STEERING WHEEL AND COLUMN REMOVAL/INSTALLATION .)
4. Remove in the order indicated in the table.

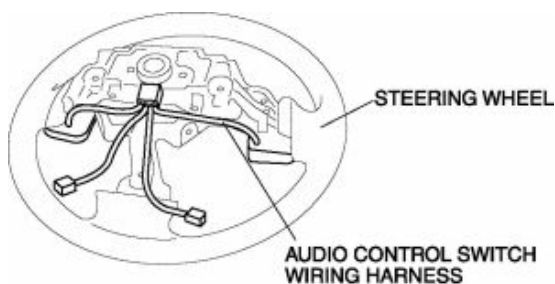


1	Steering shift switch (AT vehicles)
2	Cover
3	Audio control switch (See Audio Control Switch Installation Note .)

5. Install in the reverse order of removal.

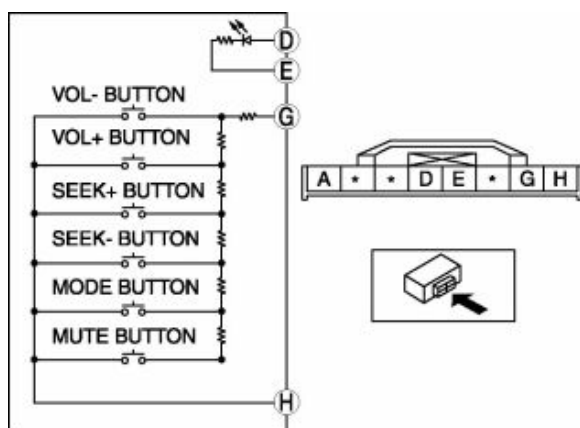
Audio Control Switch Installation Note

1. Install the audio control switch so that the audio control switch wiring harness passes behind the steering wheel as shown in the figure.



AUDIO CONTROL SWITCH INSPECTION

1. Disconnect the negative battery cable.
2. Remove the driver-side air bag module.(See DRIVER-SIDE AIR BAG MODULE REMOVAL/INSTALLATION .)
3. Disconnect the audio control switch connector.
4. Verify the resistance and continuity between the audio control switch terminals.



If the resistance and continuity are not as indicated in the tables, replace the audio control light switch.

Terminal			
D	E	G	H
Diode		R	
○	○	○	○

R:

Resistance. See the table.

Switch position	Resistance (ohm)
VOL- switch ON	51—56
VOL+ switch ON	140—154
SEEK+ switch ON	286—315
SEEK- switch ON	534—589
MODE switch ON	985—1,080
MUTE switch ON	1,940—2,130
OFF	4,800—5,290