

# Service Information

Mazda Motor Corporation

3-1, Shinchi, Fuchu-cho, Aki-gun  
Hiroshima 730-8670, Japan  
TEL : 81(82)287-5323  
FAX : 81(82)287-5220



Category <b>E</b>	<b>Repair Guidance</b>	Ref. No. R008/09 <b>A</b>	Page 1 of 2
Coverage <input type="checkbox"/> Distributor only <input checked="" type="checkbox"/> Please inform your dealers		Date Issued February 3, 2009	
Please convey this information to your <input type="checkbox"/> Director <input checked="" type="checkbox"/> General Manager <input checked="" type="checkbox"/> Warranty Dept. <input checked="" type="checkbox"/> Parts Dept. <input checked="" type="checkbox"/> Training Dept. <input checked="" type="checkbox"/> Field Rep.		Date Revised May 12, 2010	
Applicable Model  RX-8 (FE / SE)		Applicable Countries or Specifications  Worldwide	

**[Revised]**

**Note: "BEGINNING VIN & DATE OF MODIFICATION" and "REPAIR PROCEDURE" have been revised.**

## Subject: Coolant Warning Light Comes ON

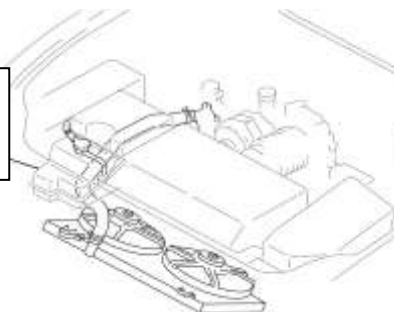
### PROBLME DESCRIPTION

Some vehicles may experience that the coolant level warning light comes on even though the amount of coolant in the radiator and coolant reservoir tank is sufficient.

### CAUSE

The surface of coolant level sensor float in the coolant reservoir tank is deteriorated and the float absorbs coolant and gets heavy, then sinks into coolant. As a result, the coolant level warning light comes on.

**Coolant  
Reservoir  
Tank**



### MASS PRODUCTION CHANGE

The specification of coolant level sensor float has been changed.  
(Replacement part differs depends on design level of the coolant level sensor.)

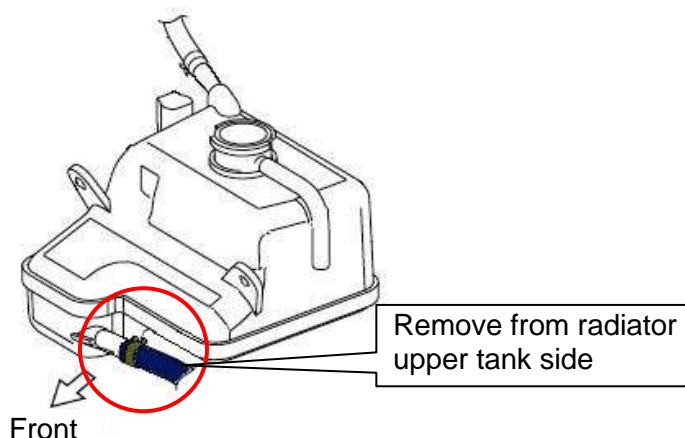
### BEGINNING VIN & DATE OF MODIFICATION

<b>US Spec.</b>		
JM1 FE**** **	403406	May 19, 2009
<b>EC Spec.</b>		
JMZ SE**** **	300933	May 19, 2009
<b>ADR Spec.</b>		
JM0 FE**** **	300696	May 19, 2009

## REPAIR PROCEDURE

1. Remove the coolant reserve tank according to Workshop Manual "COOLANT RESERVE TANK REMOVAL/INSTALLATION"

**Note:** When removing the water hose shown below from the reserve tank, remove from the radiator upper tank side then remove the reserve tank side, otherwise the nipple on radiator upper tank may break.



2. Replace the necessary parts according to the VIN range as shown below.

**US Spec.**

From JM1FE\*\*\*\*\* 100000 to 157837

**EC Spec.**

From JMZSE\*\*\*\*\* 100000 to 132988

**ADR Spec.**

From JM0FE\*\*\*\*\* 100000 to 103558



Replace the "tank with sensor"

**US Spec.**

From JM1FE\*\*\*\*\* 157838 to 403405

**EC Spec.**

From JMZSE\*\*\*\*\* 132989 to 300932

**ADR Spec.**

From JM0FE\*\*\*\*\* 103559 to 300695



Replace the "tank only"

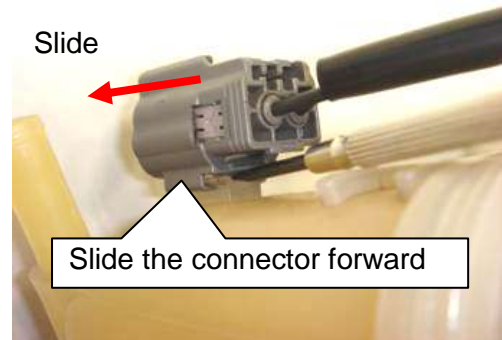
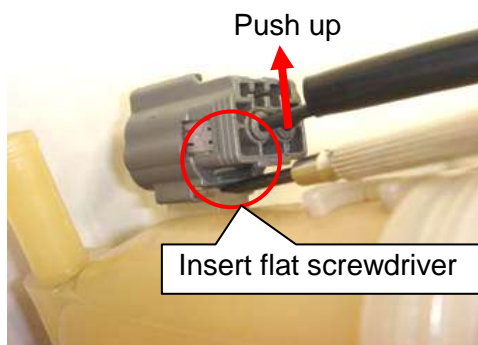
### **Replacement procedure of "tank with sensor"**

- (1) Remove the cooling system cap from the coolant reserve tank. The cap will be reused.
- (2) Install a new coolant reserve tank (tank with sensor) and then attach the coolant system cap.

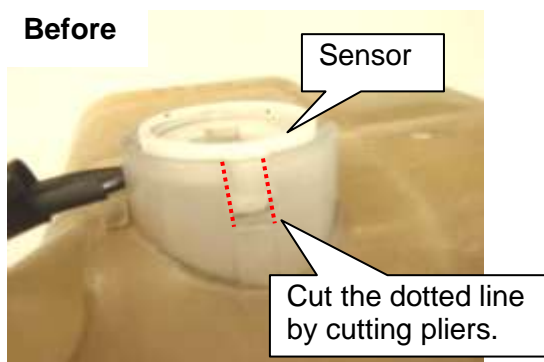
### **Replacement procedure of "tank only"**

- (1) Remove the cooling system cap from the coolant reserve tank. The cap will be reused.

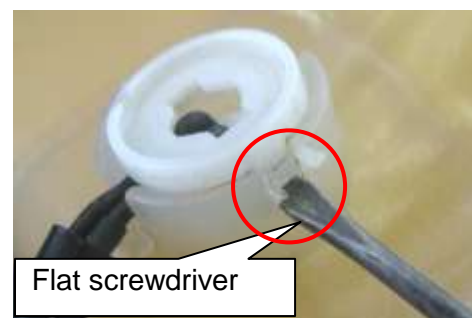
- (2) To remove the sensor connector from the tank, insert a flat screwdriver underneath the connector and push up. Then slide the connector forward.



- (3) To remove the sensor from the coolant reserve tank, cut the dotted line as shown below (both sides) by using cutting pliers.



- (4) Remove the sensor from the coolant reserve tank by flat screwdriver. The sensor will be reused.
- (5) Install the sensor and attach the connector on a new coolant reserve tank.
- (6) Attach the coolant system cap.



3. Install in the reverse order of removal.

PART INFORMATION

Part No.	Part Name	Q'ty	Remark
N3Y1-15-351	Coolant Reserve Tank	1	Tank only
N3H1-15-351G			Tank with sensor

Note: Cooling system cap is not included in the part shown above. Reuse the original.

WARRANTY INFORMATION

Symptom Code	64
Damage Code	9C
Causal Part No.	Part number of coolant reserve tank
Q'ty	1
Operation No. & Labor Hours	XXE0BARX: & 0.7 Hrs. ("Tank only" replacement) XXE0BBRX: & 0.6 Hrs. ("Tank with sensor" replacement)
Period Covered	Normal Warranty Period

Note: As for coolant, please claim "5555-CL-001" (1 Liter = 1) as a related part.

Shinji Kanai  
Manager, Technical Information Group  
Technical Service Dept.  
Mazda Motor Corporation  
27B2125213 (MC Internal Use)