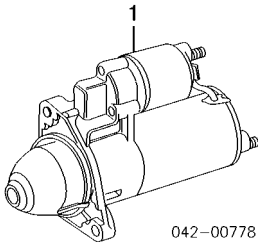


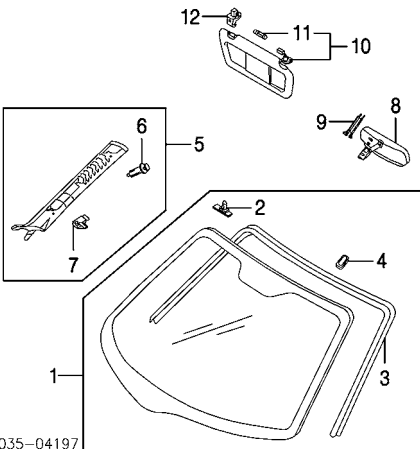
MAZDA RX-8 2004

ELECTRICAL Cont'd

STARTER Cont'd



WINDSHIELD

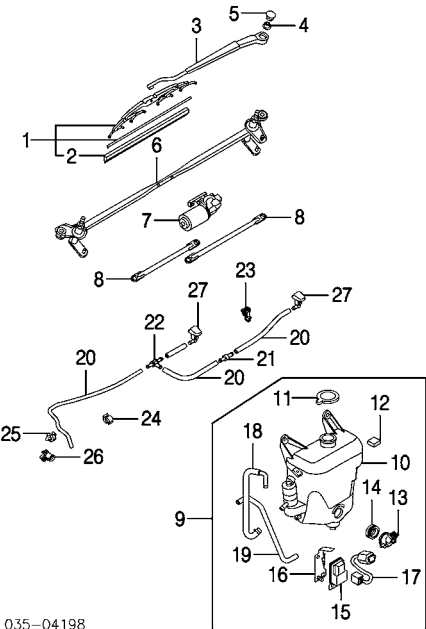


- 1 Glass Assy, Windshield
Mazda
Man Day/Night Mirror
w/VIN Plate
w/o VIN Plate
Auto Day/Night Mirror
2 Pin, Moulding (3)
3 Moulding, Windshield
4 Mount, Mirror
Man Day/Night Mirror
Auto Day/Night Mirror-Serviced w/Windshield Glass Assy
Adhesive
5 Garnish Assy, Windshield
Clip, Trim
6 Type 1
7 Type 2 (2/Side)
8 Mirror, Rear View
Man Day/Night
Auto Day/Night
9 Cover, Mirror
Auto Day/Night
10 Visor Assy, Sun
R/L N.A.
11 Bulb, Visor
12 Clip, Visor

WIPER SYSTEM

Illustration Located in Next Column

- 1 Blade Assy, Wiper
2 Refill, Wiper
3 Arm, Wiper
4 Nut, Wiper Arm
5 Cap, Wiper Arm
6 Link, Wiper
7 Motor, Wiper
8 Arm, Wiper Link

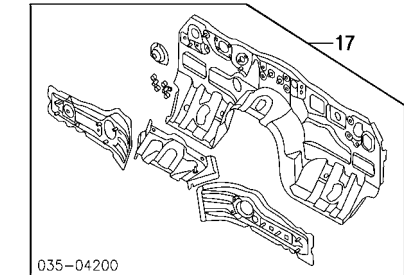
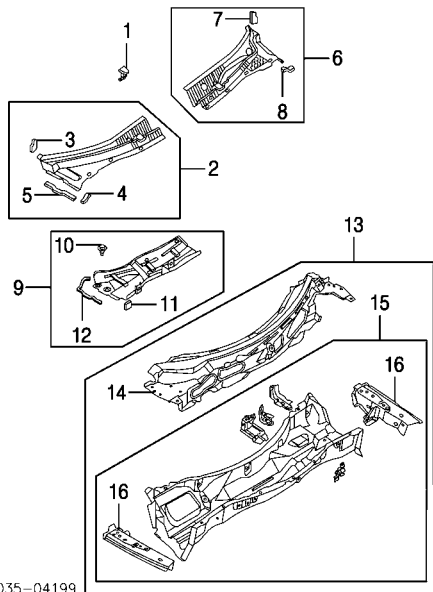


- 9 Tank Assy, Washer
w/ H/Lamp Washers
w/o H/Lamp Washers
Std Capacity
Large Capacity
10 Tank, Washer
w/ H/Lamp Washers
w/o H/Lamp Washers
Std Capacity
Large Capacity
11 Cap, Tank
12 Switch, Level
w/ H/Lamp Washers
13 Pump, Washer
14 Grommet, Pump
15 Pump, H/Lamp Washer
16 Bracket, Pump
17 Harness, Pump
18 Pipe, H/Lamp Washer
19 Hose, Washer Tank
20 Hose, Washer Nozzle
21 Connector, Hose
22 Clip, Washer Hose
23 Type 1 (2)
24 Type 2 (3)
25 Type 3
26 Type 4
27 Nozzle, Washer

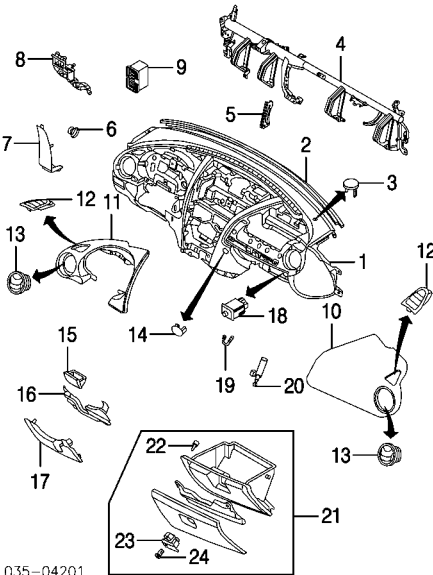
COWL & DASH

Illustration Located in Next Column

- 1 Nozzle, Washer-See Windshield Section
2 Grille Assy, Right Cowl
3 Moulding, Cowl
4 Gasket, Right Cowl Grille
5 Type 1
6 Type 2
6 Grille Assy, Left Cowl
7 Moulding, Cowl
8 Gasket, Left Cowl Grille
9 Grille Assy, Center Cowl
10 Clip, Cowl (6)
11 Gasket, Center Cowl Grille
12 Type 1
13 Type 2
13 Cowl & Dash Assy
14 Panel, Cowl
15 Panel Assy, Upper Dash
16 Plate, Upper Cowl (a)
17 Panel, Lower Dash

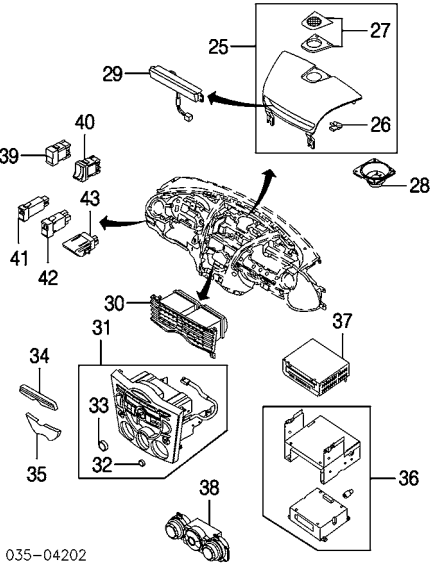


INSTRUMENT PANEL



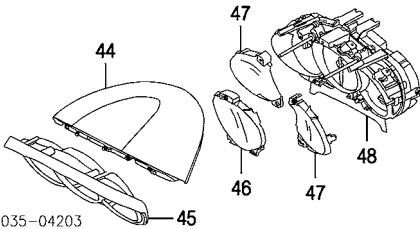
- 1 Panel, Instrument
2 Seal, Inst Panel
3 Cover, Sensor
4 Member, Inst Panel
5 Bracket, Member
6 Cap, Inst Panel (2)
7 Panel, Side
8 Panel, Switch
9 Block, Fuse
10 Module, Passenger Air Bag-See Air Bag System Section
11 Pad, Inst Panel

- | | |
|------------------------|--------------------------------|
| 12 Grille, Defroster | R F151-60-160
L F151-60-170 |
| 13 Grille, Side Vent | R/L F151-64-730 |
| 14 Cover, Hole | FE01-55-723A-02 |
| 15 Box, Coin | L FE01-64-18YA-02 |
| 16 Bolster, Knee | L FE01-60-K90 |
| 17 Panel, Lower | L FE01-64-280-02 |
| 18 Switch, Valet | GK2A-66-4K0 |
| 19 Striker, Glove Box | F151-64-101 |
| 20 Damper, Glove Box | FE01-64-08XB |
| 21 Box Assy, Glove | FE01-64-030-02 |
| 22 Bumper, Rubber (2) | LB82-64-046 |
| 23 Lock, Glove Box (1) | FE01-64-090A-02 |
| 24 Cylinder, Lock (1) | GE4T-64-09YB-00 |
- (1)Included w/Glove Box Assy



035-04202

- | | |
|---------------------------------------|--|
| 25 Cover Assy, Center | w/Navigation System (1)See Electrical Section
w/o Navigation System |
| 6 Speaker System | F151-55-210B |
| 9 Speaker System | F152-55-210B |
| (1)Serviced w/Navigation Display Assy | |
| 26 Clip, Spring (a) (10) | B30D-64-345 |
| 27 Grille, Speaker (a) | |
| 9 Speaker System | F151-55-531 |
| (a) Included w/Center Cover Assy | |
| 28 Speaker, Dash | |
| 9 Speaker System | F151-66-960 |
| 29 Display, Information | F151-61-1J0 |
| 30 Grille, Center Vent | F151-64-930 |
| 31 Panel Assy, Center | FE01-66-9H0 |
| 32 Knob, Control (2) | F152-66-BC1 |
| 33 Knob, Volume (1) | F151-66-BC1 |
| (1)Included w/Center Panel Assy | |
| 34 Trim, Upper | |
| w/CD Changer | F153-66-BG4 |
| w/o CD Changer | F152-66-BG4 |
| 35 Trim, Lower | F151-66-BC0 |
| 36 Radio | |
| 6 Speaker System | FE01-66-AS0 |
| 9 Speaker System | FE02-66-AS0 |
| 37 Player, CD | |
| w/Auto Changer | TC87-79-EG0 |
| w/o Auto Changer | GK1R-66-AG0 |
| 38 Control, A/C/Heater | FE01-61-190 |
| Cover, Switch Hole | |
| 39 No. 1 (2) | GJ6E-55-225 |
| No. 2 | |
| w/o DSC | GJ6E-55-225 |
| 41 Rheostat | F151-66-6R0A |
| 42 Switch, Dynamic Stability Cont | GJ6E-66-4T0 |
| 43 Switch, Luggage Lid | GK2A-66-630 |

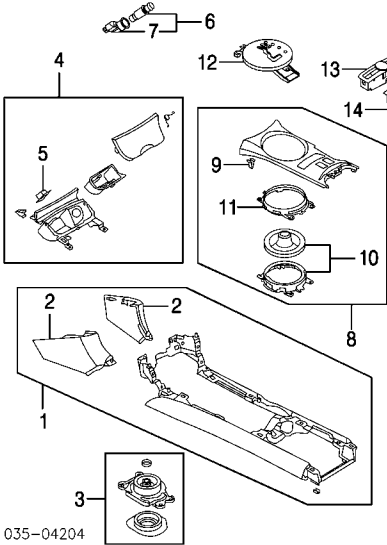


035-04203

- | | |
|------------------------|--------------------------------|
| 44 Hood, Inst Cluster | FE01-55-463-02 |
| 45 Panel, Cluster | FE01-55-214-02 |
| Lens, Cluster | |
| 46 Center | F151-55-447 |
| 47 Side | R F157-55-447
L F154-55-447 |
| 48 Cluster, Instrument | Man Trans FE05-55-471 |

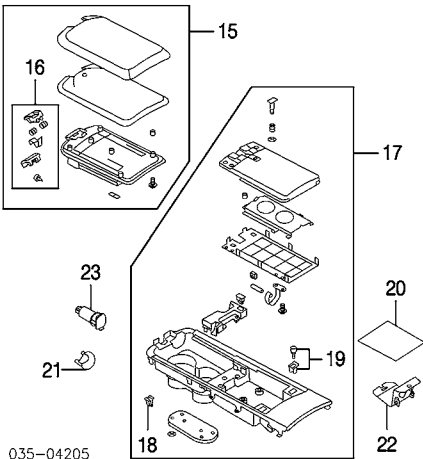
Auto Trans FE01-55-471

CENTER CONSOLE



035-04204

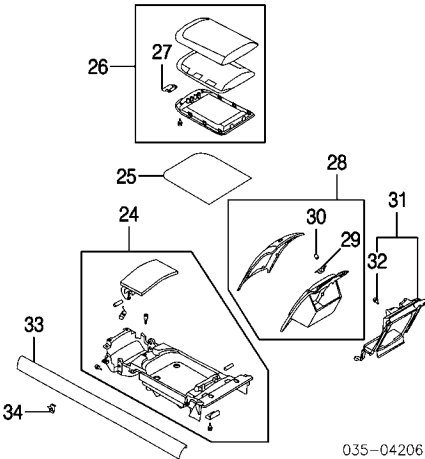
- | | |
|---|---------------------------------------|
| 1 Console Assy, Front | F151-64-320D-02 |
| 2 Panel, Side (1) | R F151-64-231A-02
L F151-64-241-02 |
| (1)Included w/Front Console Assy | |
| 3 Boot, Lower Shift | |
| Man Trans | F157-64-490 |
| 4 Ashtray Assy | F151-64-610A-02 |
| 5 Lamp, Ashtray (1) | F151-64-61Y |
| (1)Included w/Ashtray Assy | |
| 6 Lighter Assy, Cigarette | F151-66-250 |
| 7 Ring, Illumination (1) | F151-66-251 |
| (1)Included w/Cigarette Lighter Assy | |
| 8 Panel Assy, Front Console | |
| Man Trans | |
| w/Navigation System | F152-64-430D-02 |
| Cloth Seats | FE20-64-430C-02 |
| Leather Seats | |
| w/o Navigation System | |
| Cloth Seats | F151-64-430D-02 |
| Leather Seats | FE04-64-430C-02 |
| Auto Trans | |
| w/Navigation System | F155-64-430D-02 |
| Cloth Seats | FE04-64-430C-02 |
| Leather Seats | |
| w/o Navigation System | |
| Cloth Seats | F154-64-430D-02 |
| Leather Seats | FE02-64-430C-02 |
| S47P-64-345 | |
| 9 Clip, Panel (a) | |
| (a) As Required | |
| 10 Plate, Trim (1) | F151-64-333 |
| 11 Boot, Shift (1) | |
| Man Trans | F151-64-330A |
| (1)Included w/Front Console Panel Assy | |
| 12 Indicator, Shift | |
| Auto Trans | FE01-64-350A |
| 13 Control, Navigation-See Electrical Section | |
| 14 Switch, Seat Heater | R GJ6E-66-420-02
L GJ6A-66-420-02 |



035-04205

- | | |
|--------------------------------|-----------------|
| 15 Lid Assy, Console | F151-64-36YB-02 |
| 16 Latch, Console Lid (1) | F151-55-28XA |
| (1)Included w/Console Lid Assy | |

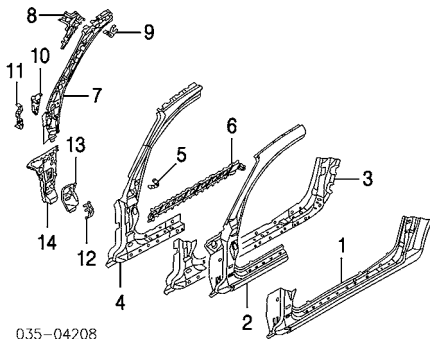
- | | |
|-------------------------------|-----------------|
| 17 Holder Assy, Cup | |
| w/Navigation System | FE05-64-39XB-02 |
| w/o Navigation System | FE01-64-39XB-02 |
| 18 Clip, Panel (a) | S47P-64-345 |
| (a) As Required | |
| 19 Bumper, Lid (1) | F151-64-47X |
| (1)Included w/Cup Holder Assy | |
| 20 Mat, Console | F151-64-393B |
| 21 Cover, Front Hole | F151-55-721 |
| 22 Cover, Rear Hole | F151-55-723A |
| 23 Socket, Power | GK2A-66-290 |



035-04206

- | | |
|--------------------------------|--------------------------------|
| 24 Box, Rear Console | |
| w/Navigation System | F152-64-440A-02 |
| w/o Navigation System | F151-64-440B-02 |
| 25 Mat, Box | |
| w/Navigation System | F152-64-449A |
| w/o Navigation System | F151-64-449A |
| 26 Lid Assy, Box | F151-64-460-02 |
| 27 Latch, Lid (1) | F151-64-453 |
| (1)Included w/Box Lid Assy | |
| 28 Box Assy, Storage | F151-64-50XA-02 |
| 29 Lock, Storage Box (1) | F151-64-45YA |
| 30 Cylinder, Lock (1) | GE4T-64-09YB-00 |
| (1)Included w/Storage Box Assy | |
| 31 Frame Assy, Back | F151-64-510 |
| 32 Cushion, Console Box (3) | LB82-64-046 |
| (3)Included w/Back Frame Assy | |
| 33 Panel, Side Console | R F151-64-421
L F152-64-421 |
| 34 Clip, Panel (1) | R/L S47P-64-345 |
| (1)As Required | |

ROCKER/PILLARS/FLOOR
SHEET METAL



035-04208

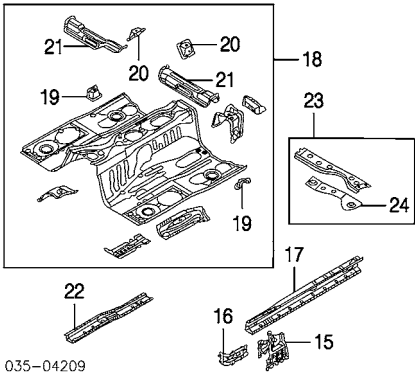
- | | |
|-----------------------------|----------------------------------|
| 1 Panel, Outer Side Sill | R F1Y1-70-270
L F1Y1-71-270 |
| 2 Pillar, Outer Hinge | R F1Y1-70-220A
L F1Y1-71-220 |
| 3 Panel, Inner Side Sill | R F1Y1-70-27XA
L F1Y1-71-27X |
| 4 Reinf, Hinge Pillar | R F1Y1-70-030A
L F1Y1-71-030 |
| 5 Bracket, Pillar | R F1Y1-70-21Y
L F151-71-21Y |
| 6 Gusset, Sill | R F151-70-135
L F151-71-135 |
| 7 Pillar, Inner Hinge | R F1Y1-70-240
L F1Y1-71-240 |
| 8 Reinf, Up Pillar | R F151-70-24Z
L F151-71-24Z |
| 9 Brkt, Front Assist Handle | R FE01-70-192
L FE01-71-26XA |
| 10 Brkt, Inst Panel | R FE01-70-260
L FE01-71-260 |
| 11 Brkt, Inner Pillar | R F151-70-071D
L F151-71-071D |
| 12 Brkt, Fender | |

MAZDA RX-8 2004

ROCKER/PILLARS/FLOOR Cont'd

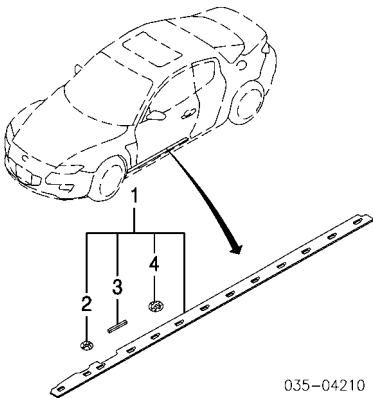
SHEET METAL Cont'd

- | | | |
|----|-------------------------|---------------|
| 13 | Reinf, Lwr Hinge Pillar | R F151-70-058 |
| | | L F151-71-058 |
| 14 | Reinf, Side Cowl | R F151-70-651 |
| | | L F151-71-651 |



- | | | |
|------------------------------------|-----|--------------|
| 15 Panel, Upper Sill | R | F151-63-95ZA |
| | L | F151-64-95ZA |
| 16 Gusset, Sill | R/L | F151-66-52Z |
| 17 Sill, Floor | R | F151-63-950D |
| | L | F151-64-950C |
| 18 Panel Assy, Front Floor | | F151-63-600E |
| 19 Bracket, Front Seat | R/L | F151-63-630A |
| 20 Bracket, Rear Seat | R | F151-63-620A |
| | L | F151-64-620A |
| 21 Crossmember, Floor | R | F151-63-650B |
| | L | F151-64-650B |
| ¶Included w/Front Floor Panel Assy | | |
| 22 Support, Front Floor | R/L | F151-63-660A |
| 23 Bracket Assy, Center | | F151-66-H20E |
| 24 Bracket, Tunnel | | F151-66-H20E |
| ¶Included w/Center Bracket Assy | | |

EXTERIOR TRIM

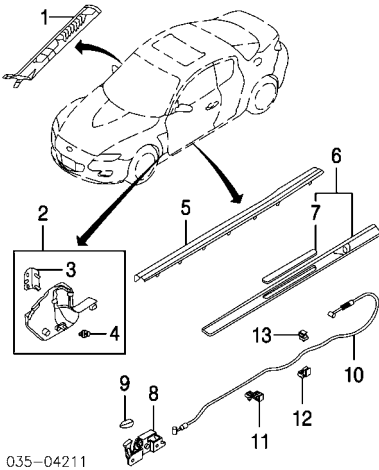


- 1 **Guard Assy, Stone** R F159-50-480A
w/Sport Susp L F159-50-490A
2 **Clip, Front† (2/Side)** R/L C100-51-SJ3A
3 **Gasket†** R/L F151-50-856
4 **Clip, Rear† (11/Side)** R/L F151-51-SJ3A
†Included w/Stone Guard Assy

INTERIOR TRIM

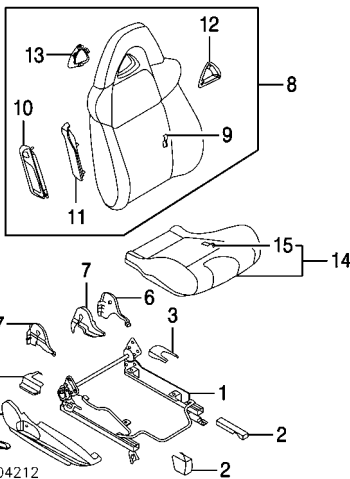
Illustration Located in Next Column

- | | | |
|---|---|-------------------|
| 1 | Garnish Assy, Windshield-See Windshield Section | |
| 2 | Panel Assy, Cowl Trim | R F151-68-370B-02 |
| | | L FE01-68-390B-02 |
| 3 | Cover, Trim Panel | R F151-68-381B-02 |
| 4 | Clip, Trim (2/Side) | R/L GE4T-68-865A |
| | *Included w/Cowl Trim Panel Assy | |
| 5 | Plate, Inner Scuff | R F151-68-710B-02 |
| | | L F151-68-720B-02 |
| 6 | Plate Assy, Outer Scuff | R F151-68-730C-02 |
| | | L F151-68-740B-02 |
| 7 | Insert, Scuff Plate | R/L F151-68-715A |
| | *Included w/Outer Scuff Plate Assy | |
| 8 | Release, Floor Door | L FE01-56-860A |
| 9 | Knob, Release | L ET11-56-862A |



- | | | |
|----|---|---------------|
| 10 | Cable, Fuel Door Release
Clip, Cable | L FE01-56-880 |
| 11 | Type 1 | L BC1D-56-833 |
| 12 | Type 2 (2) | L GE4T-56-832 |
| 13 | Type 3 (3) | L H260-67-054 |

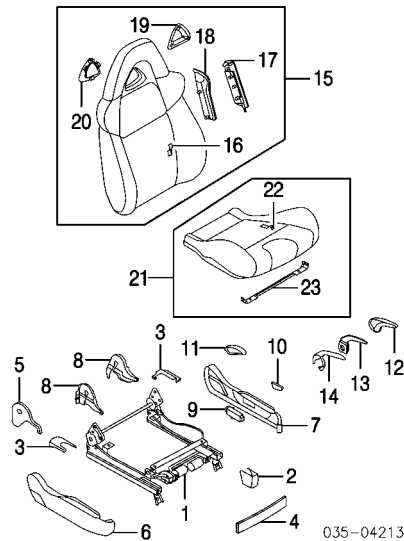
**FRONT SEAT
PASSENGER SIDE**



- | | | |
|----|---------------------------|--------------------------------------|
| 1 | Track, Seat | FE01-88-A00 |
| 2 | Cover, Front Seat Track | R F151-57-041-02
L F151-57-042-02 |
| 3 | Cover, Rear Seat Track | R F151-57-051-02
L F151-57-052-02 |
| 4 | Panel, Seat Trim | R FE01-88-1G5-02 |
| 5 | Knob, Adjuster | R F151-88-1G5-02 |
| 6 | Cover, Outer Bracket | L F151-88-1LX-02 |
| 7 | Cover, Inner Bracket | R F151-88-1F4-02
L FE01-88-1F7-02 |
| 8 | Back Assy, Seat | |
| | Cloth | FE01-88-130A-02 |
| | Leather | |
| | Black (Code FF3) | FE02-88-130A-02 |
| | Brown/Black (Code FF5) | FE02-88-130A-23 |
| | Red/Black (Code FF4) | FE02-88-130B-15 |
| 9 | Trim, Seat Back | |
| | Cloth | FE01-88-131A-02 |
| | Leather | |
| | Black (Code FF3) | FE02-88-131A-02 |
| | Brown/Black (Code FF5) | FE02-88-131A-23 |
| | Red/Black (Code FF4) | FE02-88-131A-15 |
| | Heater, Seat Back | |
| | Leather Seat | FE02-88-122 |
| 10 | Module, Side Air Bag | See Air Bag System Section |
| 11 | Cover, Side | |
| | Cloth Seat | F151-88-2M2 |
| | Leather Seat | F153-88-2M2 |
| 12 | Bezel, Front Seat Hole | F151-88-1L9A |
| 13 | Bezel, Rear Seat Hole | |
| | Cloth Seat | F151-88-1M9 |
| | Included w/Seat Back Assy | |
| 14 | Cushion Assy, Seat | |
| | Cloth Seat | F151-88-110-02 |
| | Leather Seat | |
| | Black (Code FF3) | FE02-88-110-02 |
| | Brown/Black (Code FF5) | FE02-88-110-23 |
| | Red/Black (Code FF4) | FE02-88-110A-15 |
| 15 | Trim, Seat Cushion | |
| | Cloth Seat | F151-88-111A-02 |

- | | |
|-------------------------------|-----------------|
| Leather Seat | |
| Black (Code FF3) | FE02-88-111-02 |
| Brown/Black (Code FF5) | FE02-88-111-23 |
| Red/Black (Code FF4) | FE02-88-111A-15 |
| Heater, Seat Cushion† | |
| Leather Seat | FE02-88-121 |
| †Included w/Seat Cushion Assy | |

DRIVER SIDE



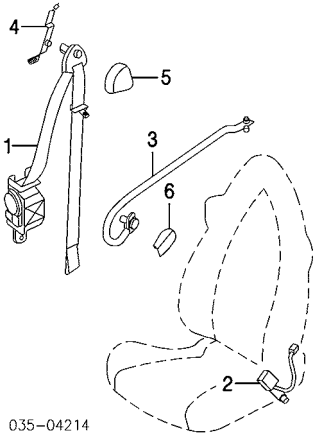
- | | | | |
|----|---|-----|-----------------|
| 1 | Track, Seat | | |
| | Man Seat | | FE01-88-H50A |
| | Pwr Seat | | FE02-88-AFC |
| 2 | Cover, Front Seat Track | R/L | F151-57-041-02 |
| 3 | Cover, Rear Seat Track | R | F151-57-053-02 |
| | | L | F151-57-054-02 |
| 4 | Trim, Front Seat | | |
| | Pwr Seat | | FE02-88-1K9-02 |
| | Panel, Right Seat Trim | | |
| 5 | Man Seat | | F151-88-1MX-02 |
| 6 | Pwr Seat | | FE02-88-1MX-02 |
| 7 | Panel, Left Seat Trim | | |
| | Man Seat | | FE01-88-1HXA-02 |
| | Pwr Seat | | FE02-88-1HX-02 |
| 8 | Cover, Inner Bracket | | |
| | Man Seat | R | FE01-88-1G4-02 |
| | | L | F151-88-1G7-02 |
| | | R | FE02-88-1G4-02 |
| | Pwr Seat | L | FE02-88-1G7-02 |
| 9 | Switch, Pwr Seat | L | GK3J-88-158 |
| 10 | Knob, Switch | | |
| | Recliner | L | GK3J-88-1H5-02 |
| | Lumbar | L | FE02-88-188 |
| | Slide | L | GK3J-88-167-02 |
| 11 | Knob, Recliner | | |
| | Man Seat | | F151-88-1H5-02 |
| 12 | Lever, Lifter | | |
| | Man Seat | L | GJ6A-88-857-02 |
| 13 | Lever, Inner | | |
| | Man Seat | L | GJ6A-88-15Y |
| 14 | Cover, Lever | | |
| | Man Seat | L | GJ6A-88-4E5-02 |
| 15 | Back Assy, Seat | | |
| | Cloth | | FE01-88-180B-02 |
| | Leather | | |
| | Black (Code FF3) | | FE02-88-180C-02 |
| | Brown/Black (Code FF5) | | FE02-88-180C-23 |
| | Red/Black (Code FF4) | | FE02-88-180C-15 |
| 16 | Trim, Seat Back¶ | | |
| | Cloth | | FE01-88-181A-02 |
| | Leather | | |
| | Black (Code FF3) | | FE02-88-181A-02 |
| | Brown/Black (Code FF5) | | FE02-88-181-23 |
| | Red/Black (Code FF4) | | FE02-88-181A-15 |
| | Heater, Seat Back¶ | | |
| | Leather Seat | | FE02-88-122 |
| 17 | Module, Side Air Bag¶-See Air Bag System Section | | |
| 18 | Cover, Side¶ | | |
| | Cloth Seat | | F151-88-2M3 |
| | Leather Seat | | F153-88-2M3 |
| 19 | Bezel, Front Seat Hole¶ | | F151-88-1L9A |
| 20 | Bezel, Rear Seat Hole¶ | | |
| | Cloth Seat | | F151-88-1M9 |
| | ¶Included w/Seat Back Assy | | |
| 21 | Cushion Assy, Seat | | |
| | Cloth Seat | | FE01-88-160-02 |
| | Leather Seat | | |
| | Black (Code FF3) | | FE02-88-160A-02 |
| | Brown/Black (Code FF5) | | FE02-88-160A-23 |
| | Red/Black (Code FF4) | | FE02-88-160B-15 |
| 22 | Trim, Seat Cushion¶ | | |
| | Cloth Seat | | F151-88-161A-02 |
| | Leather Seat | | |
| | Black (Code FF3) | | FE02-88-161A-02 |
| | Brown/Black (Code FF5) | | FE02-88-161-23 |
| | Red/Black (Code FF4) | | FE02-88-161A-15 |
| | Heater, Seat Cushion¶ | | |

Leather Seat FE02-88-121
23 Bracket, Seat Cushion¶ F153-88-164
Leather Seat
¶Included w/Seat Cushion Assy

REAR SEAT

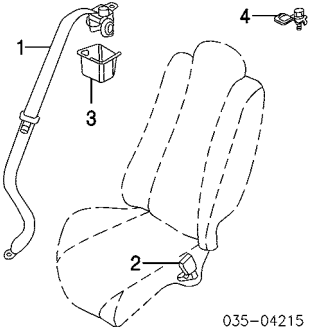
SEAT BELTS

FRONT



- | | |
|------------------------------------|--|
| 1 Belt, Seat | R FE01-57-L30D-02
L F151-57-L30D-02 |
| 2 Buckle, Seat Belt
Cloth Seats | R F151-57-620A
L F152-57-620A |
| Leather Seats | R/L F152-57-620A |
| 3 Rail, Seat Belt | R F151-57-93Y
L F151-57-99Y |
| 4 Bracket, Seat Belt | R F151-57-92X
L F151-57-99X |
| 5 Cover, Anchor | R/L S47P-57-631 |
| 6 Cap, Rail | R/L F151-57-638A |

REAR



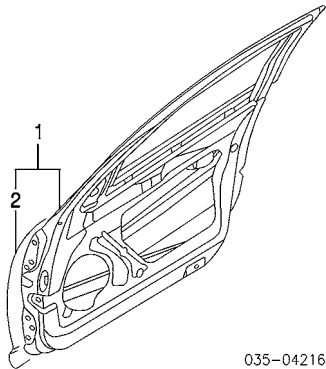
- | | |
|----------------------|---------------------------------|
| 1 Belt, Seat | R/L F151-57-730A-02 |
| 2 Buckle, Seat Belt | R/L F151-57-720 |
| 3 Cover, Retractor | R/L F152-57-988-9 |
| 4 Anchor, Child Seat | R GJ64-57-77ZA
L DE60-57-77Z |

FRONT DOOR

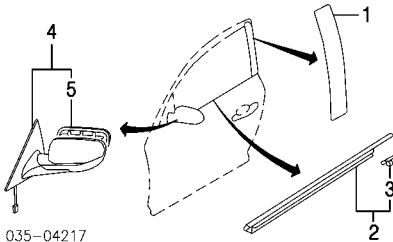
SHEET METAL

Illustration Located in Next Column

- | | |
|-----------------------|----------------------------------|
| 1 Shell Assy, Door | R F1Y1-58-02X
L F1Y1-59-02X |
| 2 Panel, Door Repair¶ | R F151-58-031D
L F151-59-031D |
- ¶Included w/Door Shell Assy



EXTERIOR TRIM

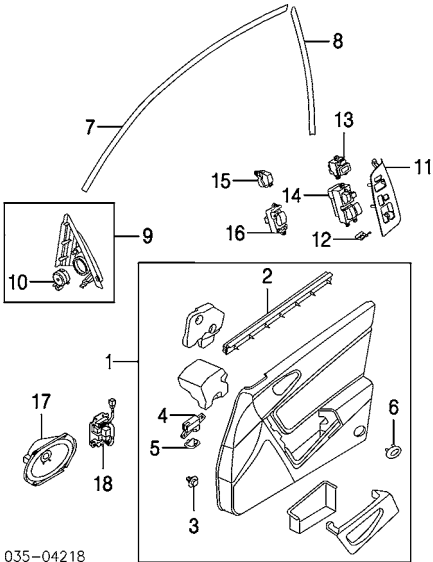


- | | |
|--------------------------------------|--|
| 1 Tape, Black-Out | R F151-50-8V1A
L F151-50-8W1A |
| 2 Moulding Assy, Outer Belt | R F151-50-640
L F151-50-650 |
| 3 Protector, Belt Moulding¶ | R F151-50-645
L F151-50-655 |
| ¶Included w/Outer Belt Moulding Assy | |
| 4 Mirror Assy, Rear View
Heated | R FE02-69-120F-PZ
L FE02-69-180F-PZ |
| Brilliant Black (Code A3F) | R FE02-69-120C-93
L FE02-69-180F-93 |
| Lightning Yellow (Code A4J) | R FE02-69-120C-97
L FE02-69-180C-97 |
| Nordic Green (Code 27C) | R FE02-69-120C-67
L FE02-69-180F-67 |
| Sunlight Silver (Code 22V) | R FE02-69-120F-01
L FE02-69-180F-01 |
| Titanium Gray (Code 29Y) | R FE02-69-120F-87
L FE02-69-180F-87 |
| Velocity Red (Code 27A) | R FE02-69-120F-87
L FE02-69-180F-87 |
| Winning Blue (Code 27B) | R FE02-69-120C-94
L FE02-69-180F-94 |
| Non-Heated | R FE01-69-120C-PZ
L FE01-69-180C-PZ |
| Brilliant Black (Code A3F) | R FE01-69-120C-93
L FE01-69-180E-93 |
| Lightning Yellow (Code A4J) | R FE01-69-120C-97
L FE01-69-180E-97 |
| Nordic Green (Code 27C) | R FE01-69-120C-67
L FE01-69-180C-67 |
| Sunlight Silver (Code 22V) | R FE01-69-120C-01
L FE01-69-180E-01 |
| Titanium Gray (Code 29Y) | R FE01-69-120F-87
L FE01-69-180C-87 |
| Velocity Red (Code 27A) | R FE01-69-120C-94
L FE01-69-180F-94 |
| Winning Blue (Code 27B) | R FE01-69-120C-94
L FE01-69-180F-94 |
| 5 Glass, Mirror¶ | R FE02-69-1G1
L FE02-69-1G7 |
| Heated | R FE01-69-1G1
L FE01-69-1G7 |
| Non-Heated | R FE01-69-1G1
L FE01-69-1G7 |
| ¶Included w/Rear View Mirror Assy | |

INTERIOR TRIM

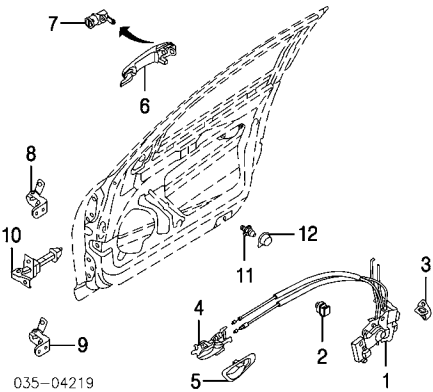
Illustration Located in Next Column

- | | |
|------------------------------|--|
| 1 Panel Assy, Trim
Cloth | R FE01-68-420C-02
L FE01-68-450C-02 |
| Leather | R FE02-68-420C-02
L FE02-68-450C-02 |
| Black (Code FF3) | R FE02-68-420C-23
L FE02-68-450C-23 |
| Brown/Black (Code FF5) | R FE02-68-420C-15
L FE02-68-450C-15 |
| Red/Black (Code FF4) | R F151-58-821
L F151-59-821 |
| 2 Weatherstrip, Inner Belt¶ | R GJ6A-68-AB1 |
| 3 Clip, Trim Panel¶ (9/Side) | |



- | | | |
|--|--|--|
| 4 LED Unit¶ | R/L F151-66-100 | |
| 5 Lens, LED¶ | R FE01-66-110
L F151-66-110 | |
| 6 Lens, Courtesy Lamp¶ | R/L F151-68-4G1 | |
| ¶Included w/Trim Panel Assy | | |
| 7 Tape, Upper Black-Out | R F151-50-8V3C-00
L F151-50-8W3C-00 | |
| 8 Tape, Rear Black-Out | R F151-50-8V5D-00
L F151-50-8W5D-00 | |
| 9 Trim Assy, Inner
6 Speaker System | R FE01-69-11YB
L FE01-69-17YB | |
| 9 Speaker System | R F152-69-11YC
L F152-69-17YC | |
| 10 Speaker, Upper¶ | R/L GK2A-66-960 | |
| 6 Speaker System | R/L F154-66-960 | |
| 9 Speaker System | ¶Included w/Inner Trim Assy | |
| 11 Panel, Switch | R FE01-68-4L1B
L FE01-68-4L6B | |
| 12 Clip, Panel | R/L GE4T-68-8N1 | |
| 13 Switch, Mirror | L GJ6A-66-600 | |
| 14 Switch, Master Window | L FE01-66-350 | |
| 15 Switch, Door Lock | R FE01-66-660 | |
| 16 Switch, Assist Window | R F151-66-370 | |
| 17 Speaker, Lower Door
6 Speaker System | R/L GJ6A-66-960 | |
| 9 Speaker System | R/L F152-66-960 | |
| 18 Amplifier, Speaker
9 Speaker System | R/L F152-66-920A | |

HARDWARE



- | | |
|---|--|
| 1 Latch, Door
w/Theft Deterrent | R FE02-58-310B
L FE01-59-310B |
| w/o Theft Deterrent | R FE01-58-310
L FE01-59-310B |
| 2 Clip, Latch Cable | R/L H260-67-054 |
| 3 Striker, Front Door-See Rear Door Section | |
| 4 Handle, Inside | R F151-58-330B-02
L F151-59-330B-02 |
| 5 Bezel, Inside Handle | R F151-58-303B-02
L F151-59-303B-02 |
| 6 Handle, Outside
Brilliant Black (Code A3F) | R GJ6A-58-410D-PZ
L GJ6A-59-410E-PZ |
| Lightning Yellow (Code A4J) | R GJ6A-58-410D-93
L GJ6A-59-410E-93 |
| Nordic Green (Code 27C) | R GJ6A-58-410D-97 |

MAZDA RX-8 2004

FRONT DOOR Cont'd

HARDWARE Cont'd

Sunlight Silver (Code 22V)

Titanium Gray (Code 29Y)

Velocity Red (Code 27A)

Winning Blue (Code 27B)

7 Cylinder, Door Lock¶

¶Included w/Vehicle Lock Set-listed in Steering Wheel/Column Section

8 Hinge, Upper Door

9 Hinge, Lower Door

10 Check, Door

11 Pin, Catch

12 Cover, Catch Pin

L GJ6A-59-410E-97

R GJ6A-58-410D-67

L GJ6A-59-410E-67

R GJ6A-58-410D-66

L GJ6A-59-410E-66

R GJ6A-58-410D-87

L GJ6A-59-410E-87

R GJ6A-58-410D-94

L GJ6A-59-410E-94

L FEY1-76-220

R F151-58-210

L F151-59-210

R F151-59-210

L F151-58-210

R/L F152-58-270A

R/L F151-58-917

R/L F151-58-973

035-04220

13 Weatherstrip Assy, Door

Clip, Weatherstrip¶

14 Type 1

15 Type 2 (23/Side)

16 Type 3

¶Included w/Door Weatherstrip Assy

17 Weatherstrip, Door Opng

R F151-58-760B

L F151-59-760B

R/L F151-58-762

R/L F154-58-762

R/L F152-58-762

R F151-72-771A

L F151-73-771E

GLASS & PARTS

1 Glass, Front Door

Mazda

2 Holder, Glass (2/Side)

3 Run, Glass

4 Moulding Assy, Outer Belt-See Exterior Trim Section

5 Weatherstrip, Inner Belt¶-See Interior Trim Section

¶Included w/Trim Panel Assy

6 Regulator, Window

7 Panel, Inner Mtg

6 Speaker System

9 Speaker System

R F151-58-511

L F151-59-511

R/L D350-58-502

R F151-58-605B

L F151-59-605B

R F151-58-97XA

L F151-59-97XA

R F152-58-97XE

L F152-59-97XD

8 Grommet, Panel (12/Side)

9 Clip, Panel

10 Motor, Window

R/L F151-58-975

R/L BC1D-56-145

R GJ6A-58-58XB

L G22C-59-58XB

REAR DOOR

SHEET METAL

1 Shell, Rear Door

R F151-72-020E

L F151-73-020E

INTERIOR TRIM

1 Panel Assy, Upper Trim

Clip, Trim¶

2 Type 1 (2/Side)

3 Type 2

4 Type 3 (7/Side)

¶Included w/Upper Trim Panel Assy

5 Panel Assy, Lower Trim

Cloth

Leather

Black (Code FF3)

Brown/Black (Code FF5)

Red/Black (Code FF4)

Clip, Trim Panel¶

6 Type 1

7 Type 2 (6/Side)

¶Included w/Lower Trim Panel Assy

8 Grommet, Trim Panel

9 Grommet, Screw (2/Side)

10 Cap, Pull Handle

11 Shield, Moisture

R F151-68-190G-02

L F151-68-210G-02

R/L F151-68-865A

R/L M020-68-865A

R/L GE4T-68-865A

R FE01-68-520C-02

L FE01-68-550C-02

R FE02-68-520C-02

L FE02-68-550C-02

R FE02-68-520C-23

L FE02-68-550C-23

R FE02-68-520C-15

L FE02-68-550C-15

R/L GJ21-68-865

R/L GJ6A-68-AB1

R/L E001-68-506

R/L B316-69-361

R F151-68-D62B-02

L F151-68-D82B-02

R/L F151-72-861

HARDWARE

1 Latch, Upper Door

2 Clip, Cable

3 Striker, Upper Latch

4 Latch, Lower Door

5 Striker, Lower Latch

R F151-72-310

L F151-73-310B

R/L B001-58-309A

R F151-72-361

L F151-73-361

R F152-72-310B

L F152-73-310B

R/L F152-72-361A

035-04224

6 Handle Assy, Door

7 Clip, Cable¶

8 Bezel, Door Handle

9 Striker, Front Door

10 Hinge, Upper Door

11 Hinge, Lower Door

12 Check, Door

13 Pin, Catch

14 Cover, Catch Pin

R F151-72-330C-02

L F151-73-330C-02

R DC69-59-315

L DC69-58-315

¶Included w/Door Handle Assy

R F151-72-303C-02

L F151-73-303C-02

R/L F151-58-361

R F151-72-210

L F151-73-210

R F151-73-210

L F151-72-210

R/L F151-72-270

R/L F151-58-917

R/L F151-58-973

035-04225

15 Weatherstrip Assy, Door

16 Clip, Weatherstrip¶

Type 1 (26/Side)

Type 2 (5/Side)

Type 3 (2/Side)

Type 4

¶Included w/Door Weatherstrip Assy

17 Weatherstrip, Door Opng-See Front Door Section

R F151-72-760C

L F151-73-760F

R/L BC1D-58-762

R/L FD01-58-762

R/L F151-58-762

R/L F152-58-762

GLASS & PARTS

1 Glass, Rear Door

Mazda

2 Bolt, Mounting (2/Side)

3 Nut, Glass

4 Washer, Glass (2/Side)

5 Latch, Glass

6 W/Strip, Glass

R FE01-72-5G0D

L FE01-73-5G0D

R/L 9YA5-30-604

R/L 0419-72-525

R/L S05B-72-523A

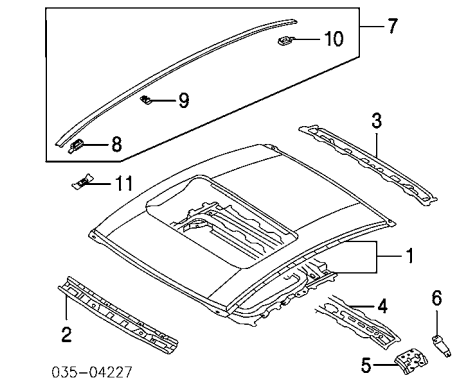
R/L F151-72-3G0A

R/L F151-72-7G1D

ROOF

SHEET METAL/EXTERIOR TRIM

Illustration Located in Next Column



- 035-04227
- 1 Panel, Roof

w/Sunroof

w/o Sunroof

2 Panel, Front Header

3 Panel, Rear Header

4 Reinf., Roof

w/o Sunroof

5 Gusset, Roof Panel

w/Sunroof

w/o Sunroof

6 Brkt., Sunroof

7 Moulding Assy, Roof

Brilliant Black (Code A3F)

Lightning Yellow (Code A4J)

Nordic Green (Code 27C)

Sunlight Silver (Code 22V)

Titanium Gray (Code 29Y)

Velocity Red (Code 27A)

Winning Blue (Code 27B)

8 Cap, Front Moulding

Brilliant Black (Code A3F)

Lightning Yellow (Code A4J)

Nordic Green (Code 27C)

Sunlight Silver (Code 22V)

Titanium Gray (Code 29Y)

Velocity Red (Code 27A)

Winning Blue (Code 27B)

9 Protector, Moulding (2/Side)

10 Cap, Rear Moulding

Brilliant Black (Code A3F)

Lightning Yellow (Code A4J)

Nordic Green (Code 27C)

Sunlight Silver (Code 22V)

Titanium Gray (Code 29Y)

Velocity Red (Code 27A)

Winning Blue (Code 27B)

Included w/Roof Moulding Assy

11 Clip, Moulding (3/Side)

R/L

GJ6A-50-629

F1Y3-70-60X

F1Y1-70-60X

F151-70-641

F151-70-700

F151-70-660

R F153-70-635

L F153-71-635

R F151-70-635

L F151-71-635

R F153-70-623

L F153-71-623

R F151-50-9H0-PZ

L F151-50-9L0-PZ

R F151-50-9H0-93

L F151-50-9L0-93

R F151-50-9H0-97

L F151-50-9L0-97

R F151-50-9H0B-67

L F151-50-9L0C-67

R F151-50-9H0-66

L F151-50-9L0C-01

R F151-50-9H0-87

L F151-50-9L0-87

R F151-50-9H0-94

L F151-50-9L0-94

R F151-50-9H1-PZ

L F151-50-9L1-PZ

R F151-50-9H1-93

L F151-50-9L1-93

R F151-50-9H1-97

L F151-50-9L1-97

R F151-50-9H1A-67

L F151-50-9L1A-67

R F151-50-9H1-66

L F151-50-9L1-66

R F151-50-9H1-87

L F151-50-9L1-87

R F151-50-9H1-94

L F151-50-9L1-94

R/L GJ6A-50-9H9

R F151-50-9H2-PZ

L F151-50-9L2-PZ

R F151-50-9H2-93

L F151-50-9L2-93

R F151-50-9H2-97

L F151-50-9L2-97

R F151-50-9H2A-67

L F151-50-9L2A-67

R F151-50-9H2-66

L F151-50-9L2-66

R F151-50-9H2-87

L F151-50-9L2-87

R F151-50-9H2-94

L F151-50-9L2-94

R F153-69-98X

F151-69-98XA
- INTERIOR TRIM
- Illustration Located in Next Column
- 1 Headliner

w/Sunroof

w/o Sunroof

2 Clip, Visor-See Windshield Section

3 Clip, Ctr Headliner

4 Clip, Rear Headliner (3)

5 Module, Side Curtain Air Bag-See Air Bag System Section

6 Pad, Front Impact

7 Pad, Rear Impact

8 Clip, Rear Pad

9 Bracket, Side Trim

10 Trim Assy, Side

FE03-68-030D-77

FE01-68-030H-77

F151-68-0C0A

GJ21-68-885B-03

R FE01-68-H10C

L FE01-68-H20C

R F152-68-H50C

L F152-68-H60C

R H380-68-885

R/L F151-68-DL1A

L F151-68-DL6A

R F151-68-12XA-02
-
- 035-04228

11 Clip, Trim (2/Side)

L F151-68-12YA-02

R/L LA10-68-D21

Included w/Side Trim Assy

12 Handle, Assist

R GJ6A-69-470B-77

13 Lamp Assy, Dome

D350-51-310D-77

14 Lens, Dome Lamp

D350-51-311B

15 Bulb, Dome Lamp

9970-05-100L

Included w/Dome Lamp Assy

L F153-69-98X

F151-69-98XA
- OVERHEAD CONSOLE
-
- 035-04229

1 Console Assy, Overhead

w/Sunroof

w/o Sunroof

2 Lens

3 Bulb

Included w/Overhead Console Assy

4 Brkt., Overhead Console

w/Sunroof

w/o Sunroof

GK2A-69-970B-77

GK2E-69-970-77

R GJ6A-69-973

L GJ6E-69-973

R/L 0000-11-0194

F153-69-98X

F151-69-98XA
- SUNROOF
- Illustration Located in Next Column
- 1 Glass Assy, Sunroof

2 W/Strip, Glass

Included w/Sunroof Glass Assy

3 Welt, Sunroof

4 Rail, Drip

5 Deflector

6 Frame, Sunroof

7 Cushion, Frame

8 Link, Sunroof

9 Plate, Set

10 Sunshade

11 Stopper, Sunshade

12 Bracket, Sunroof

13 Cable, Drive

14 Guide, Front Cable

15 Guide, Rear Cable

16 Drive Unit

17 Motor, Sunroof

18 Harness, Sunroof

19 Hose, Front Drain

20 Grommet, Front Hose

21 Hose, Rear Drain

F153-69-810

F153-69-825

F153-69-981-77

F153-69-867

F153-69-880

F153-69-840

F153-69-849

R F153-69-9H1

L F153-69-9H2

R F153-69-858

L F153-69-859

F153-69-890-77

R/L F153-69-892

R/L F153-69-843-4

R/L F153-69-912-3

R F153-69-877

L F156-69-877

R/L F153-69-862-3

F153-69-860

F153-69-870

F153-69-872

R N.A.

L F153-69-920A

R/L G14T-69-926A

R F156-69-920

L F160-69-920
-
- 035-04230

22 Grommet, Rear Hose

R/L LC73-61-557A
- BACK WINDOW
-
- 035-04231

1 Window Assy, Back

Mazda

2 Moulding, Upper

3 Moulding, Lower

4 Gasket, Joint

5 Weatherstrip, Lower

6 Clip, Pin

Type 1 (3)

Type 2

7 Bolt, Stud

8 Terminal, Glass (3)

Included w/Back Window Assy

FE01-63-930B

F151-50-611A

F151-50-614

R/L F151-50-6G6A

F151-50-899

D376-63-938

F151-63-938A

R/L F151-63-939A

FB01-63-959
- QUARTER PANEL
- SHEET METAL
-
- 035-04232

1 Panel, Outer Quarter

R F1Y1-70-410D

L F1Y1-71-410C
- madpl1_g02_
- Procedure Explanation Pages Must Be Used with the Above Text for an Accurate Damage Report.
Comments or suggestions? Need assistance? Call 1-800-854-7030 or 858-578-6550. Ext. 8220. Fax 1-888-256-7969 or 858-549-0629.
- 513
- Page 513—April 22, 2004—15:33:56—Version
- Manufacturer

MAZDA RX-8 2004

QUARTER PANEL Cont'd

SHEET METAL Cont'd

2 Panel, Lower Quarter

R F151-70-4A1

L F151-71-4A1

3 Panel, Outer Side Sill-See Rocker/Pillars/Floor Section

R F1Y1-70-12YA

L F1Y1-71-12YA

4 Reinf, Rear Pillar

R F151-70-381

L F151-71-381

5 Panel, Inner Side Sill-See Rocker/Pillars/Floor Section

R F151-70-390

L F151-71-390

6 Reinf, Door Hinge

R F151-70-252

L F151-71-252

7 Reinf, Upper Striker

R F151-70-122

L F151-71-122

8 Gusset, Sill-See Rocker/Pillars/Floor Section

R F151-70-441

L F151-71-441

9 Reinf, Roof Rail

R F151-70-480C

L F151-71-481D

10 Reinf, Upr Quarter Panel

R F151-42-410B

L F151-56-83XD

11 Rail, Rear Drain

L F151-56-890D

L 0187-70-491

12 Plate, Corner

R F151-70-480C

L F151-71-481D

13 Door, Fuel

L F151-56-83XD

L F151-56-890D

14 Latch Assy, Fuel Door

L 0187-70-491

L F151-56-890D

15 Latch, Fuel Door

L F151-56-890D

L 0187-70-491

16 Stopper, Fuel Door (2)

L F151-56-890D

L 0187-70-491

17 Cable, Fuel Door Release-See Rocker/Pillars/Floor Section

L F151-56-890D

L 0187-70-491

23

24

25

26

27

28

29

30

31

32

33

34

35

36

37

38

39

40

41

42

43

44

45

46

47

48

49

50

51

52

53

54

55

56

57

58

59

60

61

62

63

64

65

66

67

68

69

70

71

72

73

74

75

76

77

78

79

80

81

82

83

84

85

86

87

88

89

90

91

92

93

94

95

96

97

98

99

100

101

102

103

104

105

106

107

108

109

110

111

112

113

114

115

116

117

118

119

120

121

122

123

124

125

126

127

128

129

130

131

132

133

134

135

136

137

138

139

140

141

142

143

144

145

146

147

148

149

150

151

152

153

154

155

156

157

158

159

160

161

162

163

164

165

166

167

168

169

170

171

172

173

174

175

176

177

178

179

180

181

182

183

184

185

186

187

188

189

190

191

192

193

194

195

196

197

198

199

200

201

202

203

204

205

206

207

208

209

210

211

212

213

214

215

216

217

218

219

220

221

222

223

224

225

226

227

228

229

230

231

232

233

234

235

236

237

238

239

240

241

242

243

244

245

246

247

248

249

250

251

252

253

254

255

256

257

258

259

260

261

262

263

264

265

266

267

268

269

270

271

272

273

274

275

276

277

278

279

280

281

282

283

284

285

286

287

288

289

290

291

292

293

294

295

296

297

298

299

300

301

302

303

304

305

306

307

308

309

310

311

312

313

314

315

316

317

318

319

320

321

322

323

324

325

326

327

328

329

330

331

332

333

334

335

336

337

338

339

340

341

342

343

344

345

346

347

348

349

350

351

352

353

354

355

356

357

358

359

360

361

362

363

364

365

366

367

368

369

370

371

372

373

374

375

376

377

378

379

380

381

382

383

384

385

386

387

388

389

390

391

392

393

394

395

396

397

398

399

400

401

402

403

404

405

406

407

408

409

410

411

412

413

414

415

416

417

418

419

420

421

422

423

424

425

426

427

428

429

430

431

432

433

434

435

436

437

438

439

440

441

442

443

444

445

446

447

448

449

450

451

452

453

454

455

456

457

458

459

460

461

462

463

464

465

466

467

468

469

470

471

472

473

474

475

476

477

478

479

480

481

482

483

484

485

486

487

488

489

490

491

492

493

494

495

496

497

498

499

500

501

502

503

504

505

506

507

508

509

510

511

512

513

514

515

516

517

518

519

520

521

522

523

524

525

526

527

528

529

530

531

532

533

534

535

536

537

538

539

540

541

542

543

544

545

546

547

548

549

550

551

552

553

554

555

556

557

558

559

560

561

562

563

564

565

566

567

568

569

570

571

572

573

574

575

576

577

578

579

580

581

582

583

584

585

586

587

588

589

590

591

592

593

594

595

596

597

598

599

600

601

602

603

604

605

606

607

608

609

610

611

612

613

614

615

616

617

618

619

620

621

622

623

624

625

626

627

628

629

630

631

632

633

634

635

636

637

638

639

640

641

642

643

644

645

646

647

648

649

650

651

652

653

654

655

656

657

658

659

660

661

662

663

664

665

666

667

668

669

670

671

672

673

674

675

676

677

678

679

680

681

682

683

684

685

686

687

688

689

690

691

692

693

694

695

696

697

698

699

700

701

702

703

704

705

706

707

708

709

710

711

712

713

714

715

716

717

718

719

720

721

722

723

724

725

726

727

728

729

730

731

732

733

734

735

736

737

738

739

740

741

742

743

744

745

746

747

748

749

750

751

752

753

754

755

756

757

758

759

760

761

762

763

764

765

766

767

768

769

770

771

772

773

774

775

776

777

778

779

780

781

782

783

784

785

786

787

788

789

790

791

792

793

794

795

796

797

798

799

800

801

802

803

804

805

806

807

808

809

810

811

812

813

814

815

816

817

818

819

820

821

822

823

824

825

826

827

828

829

830

831

832

833

834

835

836

837

838

839

840

841

842

843

844

845

846

847

848

849

850

851

852

853

854

855

856

857

858

859

860

861

862

863

864

865

866

867

868

869

870

871

872

873

874

875

876

877

878

879

880

881

882

883

884

885

886

887

888

889

890

891

892

893

894

895

896

897

898

899

900

901

902

903

904

905

906

907

908

909

910

911

912

913

914

915

916

917

918

919

920

921

922

923

924

925

926

927

928

929

930

931

932

933

934

935

936

937

938

939

940

941

942

943

944

945

946

947

948

949

950

951

952

953

954

955

956

957

958

959

960

961

962

963

964

965

966

967

968

969

970

971

972

973

974

975

976

977

978

979

980

981

982

983

984

985

986

987

988

989

990

991

992

993

994

995

996

997

998

999

1000

EXTERIOR TRIM

1 Liner Assy, Wheelhouse

w/Sport Susp

R F157-56-1H0C

L F157-56-1J0C

2 Protector, Fuel Filler

R F157-56-1H0C

L F157-56-1J0C

Std Susp-See Fuel Tank Section

Sport Susp

3 Grommet

R/L F157-42-298

R/L C100-51-SJ3A

4 Clip, Liner

As Required

R/L BC1D-56-145

5 Guard, Upper Stone

R FE01-50-4P1A

L FE01-50-4R1A

6 Guard, Lower Stone

R FE01-50-4P2C

L FE01-50-4R2C

7 Chamber Assy, Extractor

R/L D350-51-920

8 Valve, Extractor (2/Side)

R/L D350-51-923

9 Gasket, Chamber

R/L E016-51-922

Included w/Extractor Chamber Assy

INTERIOR TRIM

1 Panel Assy, Upper Trim

R F152-68-250C-77

L F152-68-260C-77

2 Clip, Trim Panel

Type 1

R/L LA10-68-D21

Type 2 (2/Side)

R/L GE4T-68-865A

Included w/Upper Trim Panel Assy

3 Fastener, Trim Panel

R GJ21-68-885B-02

4 Cover, Trim Panel

R F152-68-2G1A-77

L F152-68-2H1A-77

5 Panel Assy, Lower Trim

Cloth

R FE01-68-58YC-02

L FE01-68-59YC-02

Leather

Black (Code FF3)

R FE02-68-58YC-02

L FE02-69-58YC-02

Brown/Black (Code FF5)

R FE02-68-58YC-23

L FE02-68-59YC-23

Red/Black (Code FF4)

R FE02-68-58YC-15

L FE02-68-59YC-15

6 Clip, Trim Panel (4/Side)

R/L GJ21-68-865

Included w/Lower Trim Panel Assy

7 Grommet, Trim Panel (4/Side)

R/L E001-68-506

8 Panel Assy, Inner Package Tray

F151-68-3A0A-02

9 Clip, Panel (2)

GJ12-68-865

Included w/Inner Package Tray Panel Assy

10 Panel Assy, Outer Package Tray

6 Speaker System

R F151-68-3WX-02

L F151-68-3WY-02

9 Speaker System

R F154-68-3WX-02

L F154-68-3WY-02

11 Clip, Panel (2/Side)

R/L GJ12-68-865

12 Speaker, Tweeter

9 Speaker System

R/L F153-66-960

Included w/Outer Package Tray Panel Assy

13 Clip, Panel

Type 1

R/L B041-68-865-02

Type 2

R/L GJ21-68-885B-02

As Required

14 Speaker, Rear

R/L F155-66-960

R/L F156-66-960

F151-66-A21

9 Speaker System

Cloth Seats

F151-66-920

Leather Seats

F153-66-920A

6 Speaker System

9 Speaker System

15 Brkt, Amplifier

16 Amplifier, Power

9 Speaker System

Cloth Seats

Leather Seats

R/L F155-66-960

R/L F156-66-960

F151-66-A21

F151-66-920

F153-66-920A

LUGGAGE LID

1 Lid, Luggage

F151-52-610B

2 Trim, Luggage Lid

F151-68-8WXD

3 Clip, Trim

As Required

4 Bezel, Trim Panel

GJ6A-68-966-02

5 Lens, Luggage Lamp

B100-51-441

6 Bulb

0000-11-0194

7 Hinge Assy, Lid

R F151-52-710B

L F151-52-720B

8 Cushion, Hinge (2/Side)

R/L GJ6A-56-802A

Included w/Lid Hinge Assy

9 Strut, Luggage Lid

R/L F151-56-930

10 Latch, Luggage Lid

FE01-56-820B

11 Cylinder, Luggage Lid Lock

FEY2-76-230

w/Theft Deterrent

FEY5-76-230

Included w/Vehicle Lock Set-listed in Steering Wheel/Column Section

12 Striker

F151-56-840A

13 Lamp Assy, Stop-See Rear Lamps Section

F152-51-731A

14 Emblem

F151-51-710B

15 Nameplate Assy

"MAZDA"

F151-51-958

16 Clip, Nameplate (3)

Included w/Nameplate Assy

17 Nameplate (Adhesive)

RX-8

F151-51-721A

18 W/Strip, Luggage Lid

F151-56-951D

REAR SUSPENSION

1 Nut, Axle

R/L LA01-33-042B

2 Washer

R/L J001-26-114A

3 Rotor, Brake

R/L F151-26-251

4 Hub, Axle

R/L F151-26-241A

5 Stud, Lug (5/Side)

R/L B455-33-062

6 Caliper Assy, Brake

R F1Z1-26-98Z
L F1Z1-26-99Z

7 Caliper, Brake

R F151-26-61X
L F151-26-71X

8 Pad Set, Brake

F1Y1-26-43Z

9 Bearing, Axle

R/L F151-26-151

10 Retainer, Bearing

R/L GE4T-33-048

11 Shield, Splash

R/L F151-26-261A

12 Knuckle Assy

R F151-26-11XA
L F151-26-12XA

Bushing, Knuckle

Type 1 (2/Side) R/L F151-33-024
Type 2 R/L F152-33-024
Type 3 R/L F151-28-430

Bolt, Mounting

R/L F151-26-118

17 Sensor, Leveling

w/DSC L FE03-51-22YB

18 Sensor, Rear ABS-See ABS/Brakes Section

19 Hose, Brake R/L F151-43-810

33

32

31

30

28

29

27

26

25

24

23

20

21

22

48

46

47

45

44

42

43

41

40

39

38

37

36

35

34

035-04239

20 Strut, Rear

Std Susp R/L F151-28-700C
Sport Susp R/L F157-28-700C

21 Bolt, Strut Mtg

R/L 9YA0-21-289

22 Washer

R/L F151-28-999

23 Spring, Coil

Std Susp R/L F151-28-011A
Sport Susp R/L FE02-28-011

24 Seat, Spring

R/L F151-28-012

25 Bumper, Rebound

R/L F152-28-1A1A

26 Cap, Bumper

R/L F151-28-777

27 Bushing, Lwr Strut

R/L F151-28-776

28 Mount, Strut

R F151-28-340C
L F151-28-34XC

29 Bracket, Mount

R/L F151-28-721

30 Gasket, Mount

R/L F151-28-003

31 Bushing, Upr Strut

R/L F151-28-775A

32 Spacer

R/L F151-28-774

33 Retainer

R/L F151-28-774

34 Arm, Front Trailing

R/L F151-28-200A

35 Link Assy, Toe Control

R/L F151-28-45XB

36 Boot, Dust

R/L F151-28-4A3

37 Bolt, Adjuster

R/L FE01-28-66Z

38 Plate, Cam

R/L FD16-28-473

39 Arm Assy, Rear Trailing

R F151-28-D00B
L F151-28-D10B

40 Boot, Dust

R/L F151-28-4B3

41 Link Assy, Lateral

Front w/DSC R F151-28-500A
L FE03-28-550A
w/o DSC R F151-28-500A
L F151-28-550A

42 Rear

R F151-28-600A
L F151-28-650A

43 Boot, Dust (2/Side)

R/L F151-28-503

44 Bolt, Adjuster

R/L F151-28-66Z

45 Plate, Cam

R/L F151-28-473

46 Bar, Stabilizer

Std Susp F151-28-151
Sport Susp F157-28-151

47 Link, Stabilizer

R/L F151-28-170

48 Bushing, Stab

R/L FD15-28-156A

49 Brkt, Stabilizer

R/L FD01-28-155A

53

52

51

50

54

51

035-04240

50 Crossmember, Rear

F151-28-80XB

51 Plate, Mounting

R/L F151-28-88Z

52 Front Washer, Stopper

R/L F151-28-88X

53 Center

R/L F151-28-998

54 Rear

R/L F151-28-880

REAR DRIVE AXLE

9

7

6

8

4

5

1

3

2

035-04241

1 Axle Assy, Drive

Man Trans R MA02-25-50XA
Auto Trans L MA02-25-60XA
R MA01-25-50X
L MA01-25-60X

2 Rotor, Rear Sensor

R/L GA2G-33-471A

3 Boot Set, Outer

Man Trans R/L MA02-22-530
Auto Trans R/L MA01-22-530

4 Joint Assy, Inner

Man Trans R/L MA02-22-520
Auto Trans R/L MA01-22-520

5 Boot Set, Inner (a)

Man Trans R/L MA02-22-540
Auto Trans R/L MA01-22-540

6 Differential Assy

Man Trans RS04-27-100E
Auto Trans w/LSD RS04-27-100E
w/o LSD RA14-27-100D
RA12-27-150B
RA12-27-320A

7 Housing, Diff

R/L RA12-27-320A

8 Cover, Diff

R/L RA12-27-320A

9 Mount, Differential

F151-39-730A

035-04241

FUEL TANK

1 Cap, Fuel Filler

FE01-42-250A

2 Cover, Lever

FE01-42-24Z

3 Pipe, Fuel Filler

FE01-42-210B

4 Hose, Fuel Filler

FE01-42-231

5 Protector, Fuel Filler

Std Susp L F157-56-1J0C
Sport Susp See Quarter Panel Section
w/Incl w/Wheelhouse Liner Assy

6 Clip, Protector (3)

L BC1D-56-145

7 Tank, Fuel

FE01-42-110A

8 Strap, Fuel Tank

R/L F151-42-710

9 Ring, Retainer

R/L F151-42-A14A

10 O-Ring, Upper

R/L F151-42-A15B

11 Pipe, Fuel

R F151-42-18XA

12 Pump, Fuel

L N3H1-13-35ZD

13 Sender, Fuel

R F151-60-960A
L F151-60-970B

14 Brkt, Fuel Sender

R F151-42-117

Illustration Located in Next Column

1

2

3

4

5

6

9

10

11

14

13

12

15

7

8

16

035-04242

15 O-Ring, Lower

L F151-42-116
R/L F151-42-A61

16 Canister, Vapor-See Emission System Section

REAR BODY

SHEET METAL/EXTERIOR TRIM

6

7

5

3

1

2

4

13

8

12

9

10

11

035-04243

1 Pan, Rear Floor

F1Y1-53-710G

2 Crossmember, Front

F151-53-900E

3 Crossmember, Center

F151-53-920D

4 Crossmember, Rear

F151-53-940B

5 Pan, Luggage Compartment

F1Y1-53-75XC

6 Panel Assy, Rear

FE01-70-750C

7 Reinf, Striker

F151-70-780

8 Rail Assy, Side

R F151-53-810K
L F151-54-810K

9 Rail Assy, Rear

R F1Y1-53-81XC
L F1Y1-54-81XD

10 Reinf, Rail (a)

R F151-53-816A
L F151-54-816A

11 Brkt, Lower Bumper (a)

R F151-53-89XA
L F151-54-89XA

12 Sill, Rear Side

R F151-53-812D
L F151-54-812D

13 Spoiler, Side

R F151-51-9B1
L F151-51-9C1

14 Clip, Spoiler (2/Side)

R/L B092-51-833

INTERIOR TRIM

1 Panel, Rear Trim

FE01-68-89XC

Illustration Located in Next Column

madpl1_g02_

Procedure Explanation Pages Must Be Used with the Above Text for an Accurate Damage Report.
Comments or suggestions? Need assistance? Call 1-800-854-7030 or 858-578-6550. Ext. 8220. Fax 1-888-256-7969 or 858-549-0629.

515

Page 515—April 22, 2004—15:33:59—Version

Manufacturer