

REAR BUMPER

1 Cover, Rear (P) FD01-60-224B
2 Dam, Air (P) FD01-60-231A
(P) Paint to Match
3 Bracket, Cover R FD01-60-3A0A
L FD01-60-3B0A
4 Absorber, Impact R FD07-60-31Y
L FD07-60-31Y
5 Bar, Reinforcement FD01-60-260A
6 Protector, Cover L FD01-50-1J1

035-01784

MAZDA RX-8 2004

SECTION INDEX

A/C /HEATER/VENTILATION	503
A/C REFRIGERANT CAPACITIES	503
ABS/BRAKES	504
AIR BAG SYSTEM	504
AIR CLEANER	506
BACK WINDOW	513
CENTER CONSOLE	509
CLEAR COAT IDENTIFICATION	501
COOLING	502
COWL & DASH	508
ELECTRICAL	507
EMISSION SYSTEM	507
ENGINE OIL COOLER	502
ENGINE UNDER COVER	506
ENGINE/TRANS	506
ENGINE/TRANS MOUNTS	506
EXHAUST	507
FRONT BUMPER	501
FRONT DOOR	511
FRONT FENDER	503
FRONT INNER STRUCTURE	504
FRONT LAMPS	502
FRONT SEAT	510
FRONT STEERING LINKAGE/GEAR	505
FRONT SUSPENSION	505
FUEL TANK	515
GRILLE	502
HOOD	502
INFORMATION LABELS	501
INSTRUMENT PANEL	508
LUGGAGE LID	514
PAINT CODE LOCATION	501
QUARTER PANEL	513
REAR BODY	515
REAR BUMPER	516
REAR DOOR	512
REAR DRIVE AXLE	515
REAR LAMPS	516
REAR SEAT	511
REAR SUSPENSION	514
ROCKER/PILLARS/FLOOR	509
ROOF	512
SEAT BELTS	511
SPECIAL CAUTIONS	501
STEERING WHEEL/COLUMN	505
SUNROOF	513
UNDERHOOD DIMENSIONS	504
WHEEL	505
WINDSHIELD	508

SPECIAL CAUTIONS

SRS

Refer to Procedure Explanation 29 for Supplemental Restraint/Air Bag Special Cautions.

PAINT CODE LOCATION

Paint code located on left door jamb.

CLEAR COAT IDENTIFICATION

All colors are clear coat.

INFORMATION LABELS

Illustration Located in Next Column

1 Label, A/C Caution	FE01-61-439
2 Label, Battery Caution	FA01-69-064B
3 Label, Fan Warning	B303-15-031A
4 Label, Fan Caution	B660-15-031
5 Label, Air Bag Warning	R/L FE01-57-K92
6 Label, Tire Pressure	
Std Susp	FE01-69-014
Sport Susp	FE02-69-014
7 Label, Safety	L FA11-69-C31B
8 Label, Fuel Warning	L TA16-69-065

MAZDA RX-8 2004

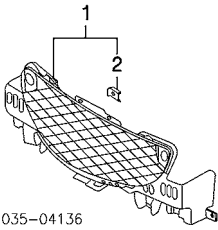
FRONT BUMPER

1 Cover, Bumper (P) FE01-50-031C
w/ H/Lamp Washers FE01-50-031D
w/o H/Lamp Washers
(P) Paint to Match
2 Emblem F151-51-731A
3 Clip, Cover (4) EA01-50-037
4 Retainer, Side Cover R F151-50-0U1D
L F151-50-0T1D
5 Grommet, Cover R/L GJ6A-50-0Z5
6 Bracket, Side Cover R F151-50-151A
L F151-50-161A
7 Retainer, Center Cover F151-50-0K0C
8 Plate, Retainer R F151-50-1A1D
L F151-50-1B1D
9 Brkt, License Plate FE01-50-170A
10 Spoiler, Front F151-51-9K1A
11 Clip, Spoiler (4) GD7A-50-EA1
12 Hook, Tow R/L F151-50-EJ0
13 Cover Set, Tow Hook F151-50-A10A
14 Cover, Lamp Hole
 w/Fog Lamps
 w/ H/Lamp Washers R FE01-50-C12
 w/o H/Lamp Washers R F151-50-C12
 w/o Fog Lamps
 w/ H/Lamp Washers
 Auto Trans R FE01-50-C11
 w/o H/Lamp Washers R F151-50-C11
15 Duct, Oil Cooler
 Man Trans R N3K2-14-708A
 Auto Trans L N3K1-14-708A
16 Plate, Seal L N3K1-14-708A
17 Rivet, Plate F151-50-1U1A
18 Fastener, Plate (4) R/L H260-61-895
19 Absorber, Energy GJ21-68-885B-02
20 Fastener, Absorber FE01-50-111A
21 Retainer, Absorber R/L BF82-50-233
22 Fastener, Retainer (3) F151-50-0J1C
23 Reinf, Bumper GD7A-50-EA1
FE01-50-070D

035-04135

MAZDA RX-8 2004

GRILLE

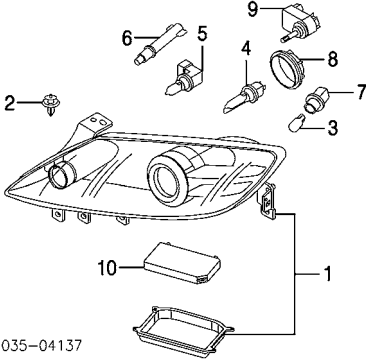


035-04136

1 Grille Assy FE01-50-1T0B
2 Grommet (2) J001-50-171
 ¶Included w/Grille Assy

FRONT LAMPS

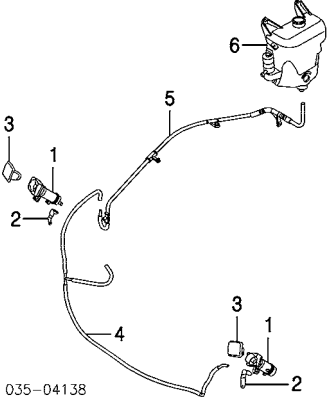
COMBINATION LAMP



035-04137

1 Lamp, Combination w/HID Lamps R FE03-51-0K0F
L FE03-51-0L0F
w/o HID Lamps R FE01-51-0K0E
L FE01-51-0L0E
2 Clip, Headlamp R/L B27K-51-PS7
3 Bulb, Marker R/L 9970-06-210Y
4 Bulb, Low Beam w/HID Lamps R/L 9070-36-350
w/o HID Lamps R/L 9070-32-550
5 Bulb, High Beam R/L 9070-38-650
6 Bulb, DRL R/L 0000-11-0194
7 Socket, Marker Bulb R/L E115-51-0B4
8 Cover, Bulb R/L N066-51-0A1
9 Motor, Leveling R/L NC82-51-210
10 Module, HID R/L F152-51-0H3

HEADLAMP WASHER

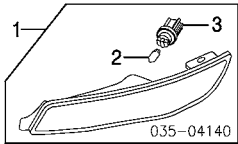


035-04138

1 Actuator, Headlamp Washer R/L FE03-51-826-7
2 Bracket, Actuator R FE03-51-067
L FE03-51-077
3 Nozzle, Washer Brilliant Black (Code A3F) R FE03-51-8G1-PZ
Lightning Yellow (Code A4J) R FE03-51-8H1-PZ
Nordic Green (Code 27C) L FE03-51-8H1-93
Sunlight Silver (Code 22V) L FE03-51-8G1-97
Titanium Gray (Code 25G) L FE03-51-8H1-67
Velocity Red (Code 27A) L FE03-51-8H1-66
R FE03-51-8G1-87

Winning Blue (Code 27B) L FE03-51-8H1-87
R FE03-51-8G1-94
L FE03-51-8H1-94
FE03-51-404
R FE03-51-405

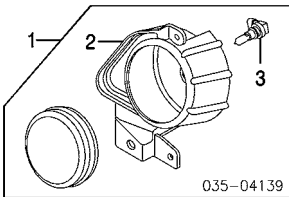
SIGNAL LAMP



035-04140

1 Lamp Assy, Signal R FE01-51-5E0C
L FE01-51-5F0C
2 Bulb, Signal¶ R/L 0000-11-0194
3 Socket, Signal Bulb¶ R/L F151-51-124A
 ¶Included w/Signal Lamp Assy

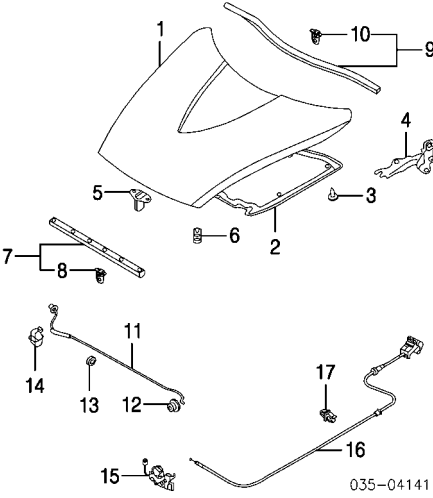
FOG LAMP



035-04139

1 Lamp Assy, Fog R FE01-51-680B
L FE01-51-690B
2 Brkt, Fog Lamp¶ R F151-51-684A
L F151-51-694A
3 Bulb, Fog Lamp¶ R/L 9070-37-550
 ¶Included w/Fog Lamp Assy

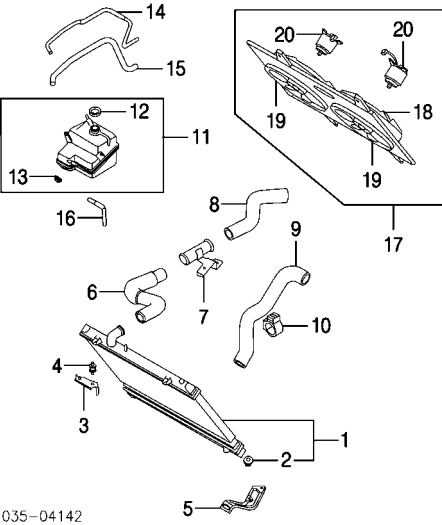
HOOD



035-04141

1 Hood F1Y1-52-31X
2 Insulator, Hood F151-56-681A
3 Clip, Insulator (13) GA2A-56-694
4 Hinge, Hood R F151-52-410C
L F151-52-420C
5 Striker, Hood F151-52-372B
6 Bumper, Hood R/L BC1M-56-786
7 Seal Assy, Front F151-56-750
8 Clip, Seal (6) BC1D-58-762
 ¶Included w/Front Seal Assy
9 Weatherstrip Assy, Rear F151-56-760
10 Clip, Weatherstrip (9) BC1D-58-762
 ¶Included w/Rear Weatherstrip Assy
11 Rod, Hood Support F151-56-650
12 Holder, Rod UH71-56-644
13 Spacer, Rod G030-52-512
14 Clip, Rod S05B-56-643
15 Latch, Hood w/Theft Deterrent FE02-56-620
w/o Theft Deterrent FE01-56-620
16 Cable, Release FE05-56-720A
Man Trans FE01-56-720A
Auto Trans D001-56-731
17 Clip, Cable (3)

COOLING



035-04142

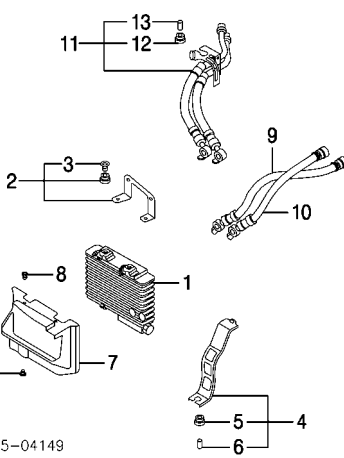
1 Radiator Assy Man Trans N3H6-15-200C
Auto Trans N3H4-15-200C
2 Cushion, Lower¶ R/L JE48-15-202
 ¶Included w/Radiator Assy
3 Brkt, Upper Rad R N3H1-15-241
L N3H1-15-251
4 Cushion, Upper R/L F285-13-363
5 Brkt, Lower Rad R N3H1-15-231
L N3H2-15-231
6 Hose, Front Upper Rad N3H1-15-186A
7 Connector, Hose N3H2-15-190
8 Hose, Rear Upper Rad N3H2-15-186
9 Hose, Lower Rad N3H1-15-185
10 Clamp, Hose N3H1-15-581
11 Tank Assy, Coolant N3H1-15-350G
12 Cap, Tank¶ D316-15-205
13 Mount, Tank¶ JE48-15-202
 ¶Included w/Coolant Tank Assy
14 Hose, Inlet N3H1-15-380A
15 Hose, Outlet N3H1-15-381A
16 Hose, Overflow N3H1-15-184B
17 Fan Assy, Cooling N3H1-15-025D
18 Shroud, Fan¶ N3H1-15-210
19 Fan, Cooling¶ R RF1S-15-140
R RF2A-15-140
20 Motor, Fan¶ R N3H1-15-150
L N3H2-15-150
 ¶Included w/Cooling Fan Assy
21 Belt, Drive N3H1-18-381
22 Pulley, Water Pump N3H1-15-131
23 Pump, Water N3H1-15-100A
24 Gskt, Water Pump N3H1-15-116
25 Housing, Thermostat N3H1-15-1H0A
26 Gskt, Housing N3H1-10-153
27 Thermostat N3H1-15-171
28 Cover, Thermostat N3H1-15-170A

ENGINE OIL COOLER

MAN TRANS

Illustration Located in Next Column

1 Cooler, Eng Oil R N3H6-14-700D
L N3H1-14-700D
2 Bracket Assy, Upper Mounting R N3H6-14-770B



035-04149

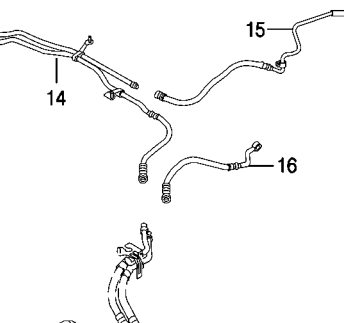
1 Cooler, Eng Oil
2 Bracket Assy, Upper Mounting
3 Spacer (2)
4 Bracket Assy, Lower Mounting
5 Grommet, Mtg
6 Spacer
7 Duct, Oil Cooler
8 Clip, Duct (3)
9 Hose Assy, Cooler
10 Grommet, Mtg
11 Spacer
12 Hose, Inlet
13 Hose, Outlet

L N3H1-14-770D
L N3H1-14-770B
L FE51-13-329
L N3H1-14-780A
L NF01-13-363
L NF01-13-364
L N3H1-14-708C
L BC1D-56-145
N3H1-14-830F
NF01-13-363
NF01-13-364
N3H1-14-720B
N3H1-14-710A

3 Spacer (2/Side)
4 Bracket Assy, Lower Mounting
5 Grommet, Mtg
6 Spacer
7 Duct, Oil Cooler
8 Clip, Duct (3/Side)
9 Right
10 Left
11 Hose Assy, Left Cooler
12 Grommet, Mtg
13 Spacer

L N3H1-14-770B
R/L FE51-13-329
R N3H6-14-780A
L N3H1-14-780A
R/L NF01-13-363
R/L NF01-13-364
R N3H6-14-708C
L N3H1-14-708C
R/L BC1D-56-145
N3H1-14-840C
N3H6-14-840C
N3H1-14-830F
NF01-13-363
NF01-13-364

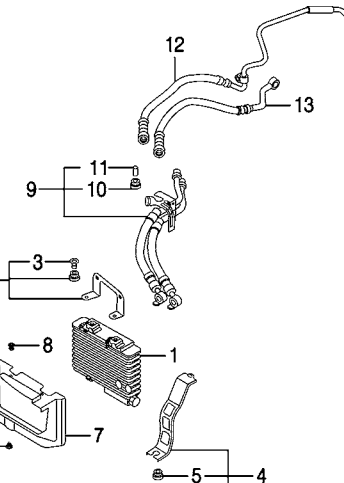
Included w/Upper Mounting Bracket Assy
Included w/Lower Mounting Bracket Assy
Included w/Cooler Hose Assy
Included w/Left Cooler Hose Assy



14 Hose, Crossover
15 Hose, Inlet
16 Hose, Outlet

N3H6-14-830A
N3H1-14-720B
N3H1-14-710A

AUTO TRANS



035-04151

12
13
9
10
11
2
3
8
1
7
5
4
6

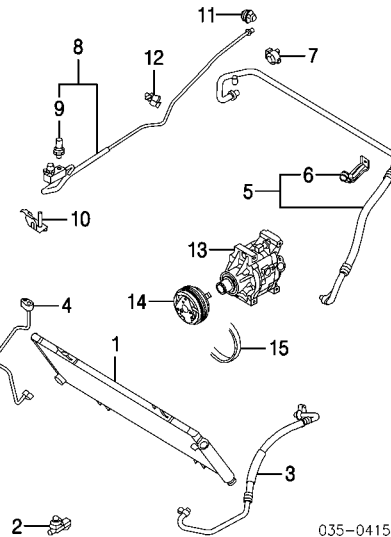
1 Cooler, Eng Oil
2 Bracket Assy, Upper Mounting
3 Spacer (2)
4 Bracket Assy, Lower Mounting
5 Grommet, Mtg
6 Spacer
7 Duct, Oil Cooler
8 Clip, Duct (3)
9 Hose Assy, Cooler
10 Grommet, Mtg
11 Spacer
12 Hose, Inlet
13 Hose, Outlet

L N3H1-14-770D
L N3H1-14-770B
L FE51-13-329
L N3H1-14-780A
L NF01-13-363
L NF01-13-364
L N3H1-14-708C
L BC1D-56-145
N3H1-14-830F
NF01-13-363
NF01-13-364
N3H1-14-720B
N3H1-14-710A

A/C REFRIGERANT CAPACITIES

A/C R-134a Refrigerant Capacity
2004: 14.8 Ozs (.93 Lbs)

A/C /HEATER/VENTILATION



035-04152

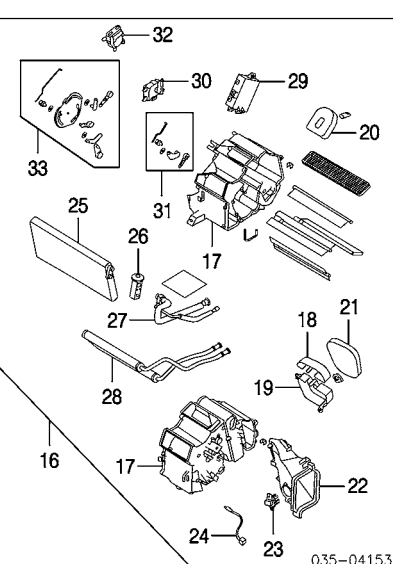
1 Condenser/Drier
2 Sensor, Ambient
3 Hose, High Pressure
4 Tube, Condenser
5 Hose Assy, Low Pressure
6 Bracket, Hose
7 Clip, Hose
8 Tube Assy, Evaporator
9 Switch, Pressure
10 Bracket, Tube
11 Clip, Tube
12 Type 1
13 Type 2
14 Compressor
15 Clutch/Pulley, Compressor
16 Belt, Drive

F151-61-480
F151-61-764
F151-61-461A
F151-61-464A
FE01-61-4T0B
FE01-61-473
NC72-61-4H5
FE01-61-46XB
F151-61-503
F151-61-472
NC73-61-4H5
F151-61-4H5
F151-61-K00
F151-61-L10
N3H1-15-908

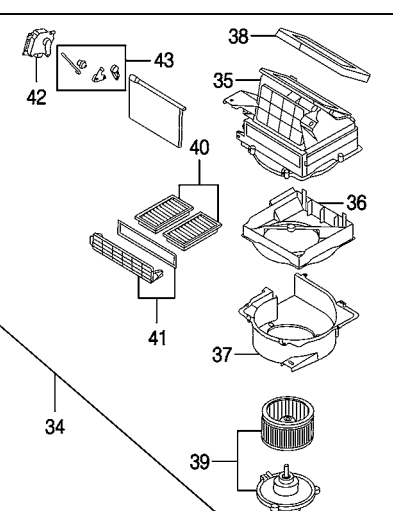
Illustration Located in Next Column

16 A/C/Heater Assy
17 Case, A/C/Heater
18 Cover, Case
19 Upper
20 Seal, Upper Case
21 Seal, Lower Case
22 Duct, Air
23 Resistor, Heater
24 Sensor, Valve
25 Core, Evaporator
26 Valve, Expansion
27 Pipe, Evaporator
28 Core, Heater
29 Amplifier, Control
30 Actuator, Temp
31 Link, Temp
32 Actuator, Mode
33 Link, Mode
34 Blower Assy
35 Case, Upper Blower
36 Case, Center
37 Case, Lower Blower
38 Seal, Case
39 Motor/Fan, Blower

FE01-61-130E
R/L FE01-61-A01-2
FE01-61-A03
FE01-61-A04
F151-61-J31
FE01-61-J12
R FE01-61-A07
FE01-61-B15
F151-61-J22A
FE01-61-J10A
F151-61-J14A
FE01-61-46ZB
FE01-61-A10
FE01-61-540A
FE01-61-A60
FE01-61-A20
FE01-61-A70
FE01-61-A30
FE01-61-140B
FE01-61-B01
FE01-61-B03
FE01-61-B02
F152-61-J04
FE01-61-B10



035-04153



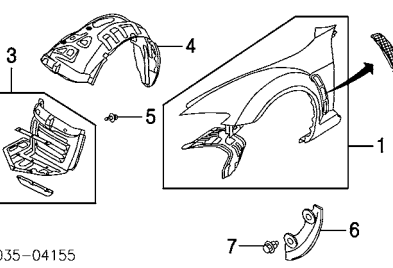
035-04154

40 Filter, Blower
41 Cover, Filter
42 Actuator, Recycle/Fresh
43 Link, Recycle/Fresh

LDY4-61-J6X
F151-61-D25
FE01-61-B60
FE01-61-B20

Included w/Blower Assy

FRONT FENDER



035-04155

1 Fender, Front
2 Grille, Fender
3 Liner, Front Fender
4 Liner, Rear Fender
5 Clip, Liner (19/Side)
6 Guard, Stone
7 Clip, Stone Guard (2/Side)

R F151-52-110
L F151-52-210
R F151-50-910A
L F151-50-920A
R F151-56-13YB
L F151-56-14YB
R F151-56-131A
L F151-56-141A
R/L BC1D-56-145
R FE02-50-4P1B
L FE02-50-4R1B
R/L BC1D-56-145

madpl1_g02_

Procedure Explanation Pages Must Be Used with the Above Text for an Accurate Damage Report.
Comments or suggestions? Need assistance? Call 1-800-854-7030 or 858-578-6550. Ext. 8220. Fax 1-888-256-7969 or 858-549-0629.

503

Page 503—April 22, 2004—15:33:39—Version

Manufacturer

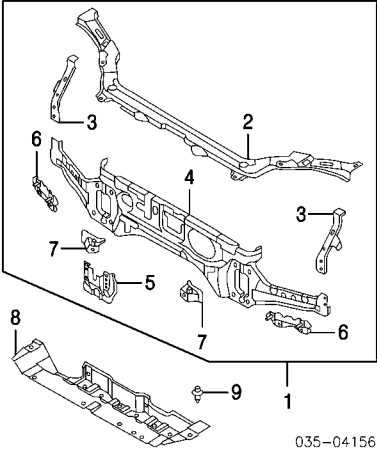
MAZDA RX-8 2004

UNDERHOOD DIMENSIONS

Information not available at time of publication.

FRONT INNER STRUCTURE

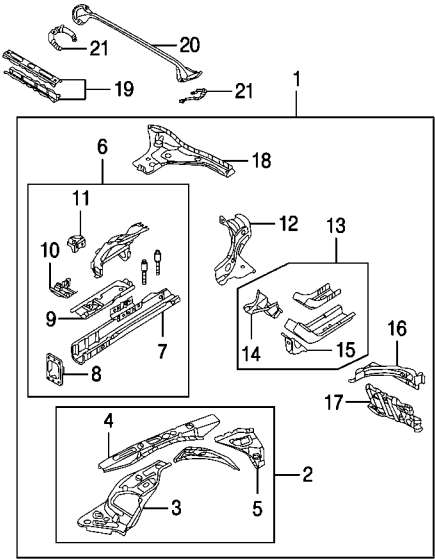
FRONT



035-04156

- 1 Support Assy, Core FE01-53-100E
- 2 Bar, Upper Tie FE01-53-150C
- 3 Bracket, Side R F151-53-1E0
- L F151-54-1E0
- 4 Bar, Lower Tie FE01-53-110B
- 5 Reinf, Center F151-53-152
- 6 Reinf, Side R/L F151-53-17YA
- 7 Brkt, Condenser Mtg R F151-53-19X
- L F151-54-19X
- As Included w/Core Support Assy
- 8 Plate, Seal F151-56-1Y1C
- 9 Clip, Seal BC1D-56-145
- As Required

SIDE

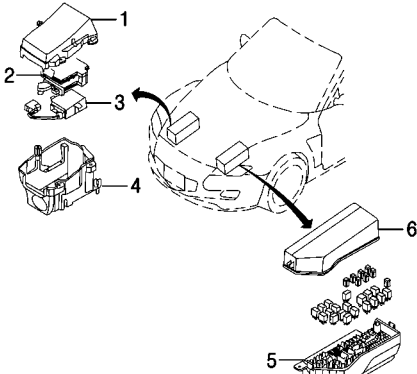


035-04157

- 1 Apron/Frame Assy R FE01-53-200
- L FE01-54-200
- 2 Apron Assy R F151-53-210E
- L F151-54-210E
- 3 Panel, Front Apron (a) R F151-53-220E
- L F151-54-220D
- 4 Reinf, Uptr Apron (a) R F151-53-260A
- L F151-54-260B
- 5 Reinf, Lwr Apron (a) R F151-53-271
- L F151-54-271
- As Included w/Apron Assy
- 6 Rail Assy, Front Frame R F151-53-31XB
- L F151-54-31XB
- 7 Rail, Front Frame (a) R F151-53-310
- L F151-54-310
- 8 Bracket, Bumper (a) R/L F151-53-33XA
- 9 Plate, Closing (a) R F151-53-320
- L F151-54-321
- 10 Reinf, Crossmember (a) R/L F151-53-16Y

- 11 Gusset, Side Rail (a) L F151-54-318
- As Included w/Front Frame Rail Assy
- 12 Reinf, Frame Rail R FE01-53-342
- L FE01-54-342
- 13 Rail Assy, Rear Frame R F151-53-390A
- L F151-54-390A
- 14 End, Rear Rail (a) R F151-53-391
- L F151-54-391
- 15 Brkt, Rear Rail (a) R F151-53-39Z
- L F151-54-39Z
- As Included w/Rear Frame Rail Assy
- 16 Rail, Outer R F151-53-331
- L F151-54-331
- 17 Box, Torque R F151-53-381
- L F151-54-381
- 18 Reinf, Rear R F151-53-39XA
- L F151-54-39XA
- As Included w/Apron/Frame Assy
- 19 Crossmember, Front F151-53-16XA
- 20 Bar, Strut Cross F151-56-49XA
- 21 Bracket, Cross Bar R F151-56-49Y
- L F151-56-49Z

ELECTRICAL COMPONENTS

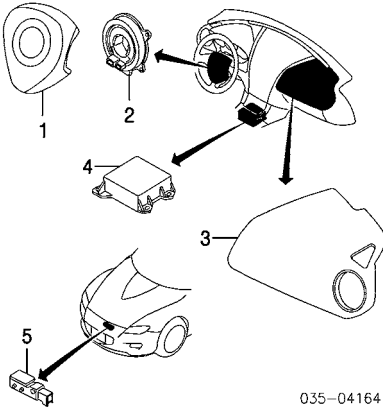


035-04158

- 1 Cover, Control Unit R F151-67-F10A
- 2 Case, Control Module-See Electrical Section
- 3 Control Unit, Pwr Strg-See Front Steering Linkage/Gear Section
- 4 Case, Control Unit R F151-67-F20B
- 5 Block, Fuse L F151-66-760
- 6 Cover, Fuse Block L F151-66-76YB

AIR BAG SYSTEM

FRONT



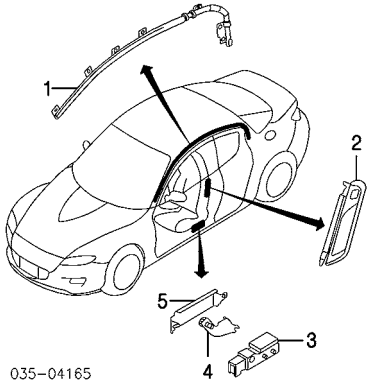
035-04164

- 1 Module, Driver Air Bag F151-57-K00E-02
- 2 Clockspring GJ6A-66-CS0
- 3 Module, Passenger Air Bag FEY1-57-K70
- 4 Control Unit, Diagnosis FE01-57-K30A
- 5 Sensor, Front Impact F151-57-K1X

SIDE

Illustration Located in Next Column

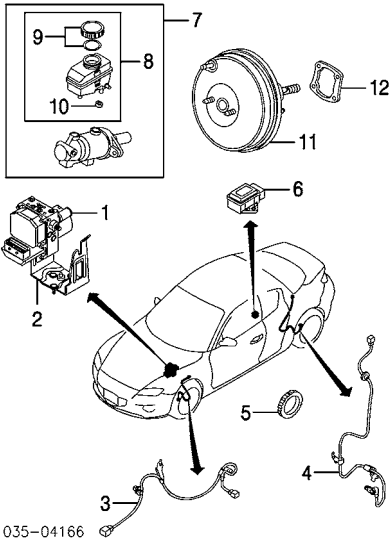
- 1 Module, Side Curtain Air Bag Driver Side F151-57-KN0B
- Passenger Side F151-57-KM0B
- 2 Module, Side Air Bag



035-04165

- Cloth Seats Driver Side FE02-57-KB0B
- Passenger Side FE02-57-KA0B
- Leather Seats Driver Side FE01-57-KB0B
- Passenger Side FE01-57-KA0B
- As Included w/Seat Back Assy-listed in Front Seat Section
- 3 Sensor, Side Impact Driver Side GJ6A-57-KC0
- Passenger Side GJ6A-57-KC0
- 4 Brkt, Outer Sensor Driver Side F152-57-KX0A
- Passenger Side F151-57-KX0A
- 5 Brkt, Inner Sensor Driver Side F154-57-KX0A
- Passenger Side F153-57-KX0A

ABS/BRAKES



035-04166

- 1 Hydraulic Unit, ABS w/DSC F1Y3-43-7A0
- w/o DSC F1Y1-43-7A0
- 2 Bracket, Hydraulic Unit w/DSC F153-43-310
- w/o DSC F151-43-310
- 3 Sensor, Front ABS R F151-43-70XA
- L F151-43-73XA
- 4 Sensor, Rear ABS R F151-43-71Y
- L F151-43-72Y
- 5 Rotor, Rear Sensor-See Rear Drive Axle Section
- As Included w/Drive Axle Assy
- 6 Sensor, Yaw Rate w/DSC F153-43-7Y1
- 7 Cylinder Assy, Brake Master Man Trans FE06-43-40ZA
- w/DSC FE05-43-40ZA
- w/o DSC FE03-43-40ZA
- Auto Trans FE01-43-40ZA
- 8 Reservoir Assy Man Trans FE05-43-55Z
- Auto Trans FE01-43-55Z
- 9 Cap, Reservoir (a) F151-43-55Y
- 10 Grommet, Mtg (a) (2) F151-43-4M4
- As Included w/Brake Master Cylinder Assy
- As Included w/Reservoir Assy
- 11 Booster, Brake FEY1-43-80Z
- 12 Gskt, Brake Booster H001-43-443

WHEEL

ALLOY WHEEL

035-04167

Wheel, Alloy	99650-47560
1 16x7-1/2 18x8	
2 Hitachi Brand	99650-48080
U-Mold Brand	99650-58080
3 Cap, Center	GJ6G-37-192
4 Nut, Lug	B002-37-160A
5 Stem, Valve	9963-60-4130
6 Sensor, Tire Pressure	FE01-37-14XA

SPARE WHEEL & HARDWARE

035-04168

Wheel, Spare-Not Applicable	FE01-37-C00B
2 Repair Kit, Flat	F151-37-C01
3 Case	FE01-37-C20
4 Compressor, Air	
Included w/Flat Repair Kit	
5 Jack	GA5R-37-790B
6 Handle, Jack	GJ21-37-810A
7 Wrench, Lug	NA01-68-070
8 Hook, Tow-See Front Bumper Section	
9 Box, Tool	F151-69-67YE
10 Clip, Tool Box	R/L GJ21-68-885B-02
11 Grommet	R/L KA01-68-86YA

FRONT SUSPENSION

035-04169

1 Rotor, Brake	
2 Cover, Lever	FE01-32-110
3 Mount, Upper	F151-32-112
4 Brkt, Bushing	R F152-32-123
5 Spring, Coil	L F151-32-123
6 Bolt, Strut Mtg	
7 Bolt, Up Cont Arm (2/Side)	
8 Arm, Lower Control	
9 Bolt, Lwr Cont Arm	
10 Plate, Cam	
11 Strut, Front	
12 Mount, Upper Strut	
13 Gasket, Upper Mount	
14 Bushing, Upper	
15 Spacer	
16 Retainer	
17 Crossmember, Susp	
18 Bar, Stabilizer	
19 Bushing, Stab	
20 Brkt, Bushing	
21 Link, Stabilizer	

Std Susp

Sport Susp

035-04170

Std Susp	R/L F151-33-251
Sport Susp	R/L F157-33-251
2 Bolt, Rotor (2/Side)	R/L 9983-10-816
3 Hub, Front Wheel	R/L F151-33-04X
4 Stud, Lug (5/Side)	R/L F151-33-062
5 Caliper Assy, Brake	
Std Susp	R F1Z1-33-98Z
Sport Susp	L F1Z1-33-99Z
6 Caliper, Brake	R F1Z7-33-98Z
7 Support, Caliper	L F1Z7-33-99Z
Std Susp	R F151-33-61X
Sport Susp	L F151-33-71X
8 Pad Set, Brake	F1Y1-33-23ZB
9 Shield, Splash	R F151-33-261A
10 Knuckle Assy	L F151-33-271A
11 Bushing, Knuckle	R F151-33-020A
Included w/Knuckle Assy	L F151-33-030A
12 Hose, Brake	R F151-33-023
13 Sensor, Front ABS-See ABS/Brakes Section	
14 Sensor, Leveling w/DSC	R F151-43-980
	L F151-43-990
	L FE03-51-21YC

FRONT STEERING LINKAGE/GEAR

Illustration Located in Next Column

1 Gear, Steering	FE01-32-110
2 Cover, Lever	F151-32-112
3 Mount, Upper	R F152-32-123
	L F151-32-123

035-04171

4 Mount, Lower	R/L F153-32-123
5 Washer, End	R/L F151-32-132
6 Rod, Inner Tie	R/L F151-32-240
7 Boot, Dust	R/L F151-32-125
8 End, Tie Rod	R F151-32-280
	L F151-32-290
9 Harness, Steering Gear	F151-67-SH0B
10 Control Unit, Pwr Strg	F151-67-880B

STEERING WHEEL/COLUMN

035-04172

1 Module, Driver Air Bag-See Air Bag System Section	
2 Wheel Assy, Steering	
Man Trans	
Black (Code FF3, FF6)	F157-32-980B-02
Brown (Code FF5)	F157-32-980B-23
Red (Code FF4)	F157-32-980B-15
Auto Trans	
Black (Code FF3, FF6)	F155-32-980B-02
Brown (Code FF5)	F155-32-980B-23
Red (Code FF4)	F155-32-980B-15
3 Switch, Cruise/Radio	
Man Trans	F157-66-4M0
Auto Trans	F155-66-4D1
4 Switch, Shifter	
Auto Trans	R F154-66-3P0
	L F155-66-3P0
5 Cover, Switch Hole	
Man Trans	R F154-66-4M1
Auto Trans	L F155-66-4M1
Included w/Steering Wheel Assy	
6 Cap, Steering Wheel	R/L F151-32-9L1

COLUMN TILT

035-04173

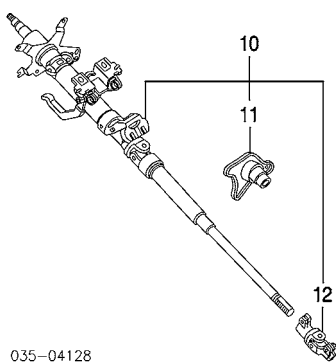
1 Cover, Upper Column	F151-60-221
2 Cover Assy, Lower Column	F151-60-230A
3 Lamp, Steering Lock	F151-60-245A
4 Lens, Lamp	F151-60-246
Included w/Lower Column Cover Assy	
5 Bulb, Lamp	B456-60-223
6 Clockspring-See Air Bag System Section	GJ6A-66-128
7 Switch, Wiper	
8 Switch, Headlamp	
w/Fog Lamps	GJ6H-66-122
w/o Fog Lamps	GJ6R-66-122

MAZDA RX-8 2004

STEERING WHEEL/COLUMN Cont'd

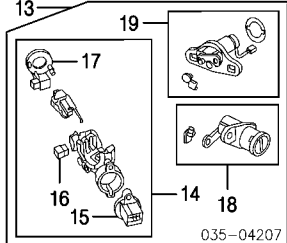
COLUMN TILT Cont'd

9 Body, Switch w/DSC w/o DSC FE04-66-1B1 GE6T-66-1B1



035-04128

10 Column Assy, Steering FE01-32-10XD
11 Cover, Lever FE01-32-210B
12 Joint, Steering FE01-32-850
Included w/Steering Column Assy



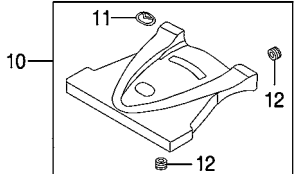
035-04207

13 Lock Set, Vehicle w/Theft Deterrent Man Trans FE06-09-010A Auto Trans FE02-09-010A
w/o Theft Deterrent Man Trans FE05-09-010A Auto Trans FE01-09-010A

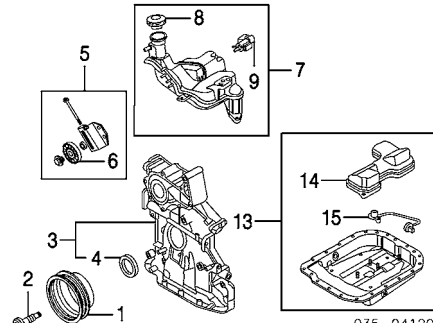
14 Lock Assy, Ignition Man Trans FEY5-76-29X Auto Trans FEY1-76-29X
15 Switch, Ignition (a) LC70-66-151
16 Switch, Interlock (a) LC70-66-157
17 Coil, Immobilizer (a) Man Trans GK2A-66-938 Auto Trans GK2A-66-938A
(a) Included w/Ignition Lock Assy

18 Cylinder, Door Lock See Front Door Section
19 Cylinder, Luggage Lid Lock See Luggage Lid Section
Included w/Vehicle Lock Set

ENGINE/TRANS



035-04129



1 Pulley, Crankshaft N3H1-11-400C
2 Bolt, Crankshaft N3H1-11-406
3 Cover Assy, Front N3H1-10-500G
4 Seal, Front Cover N3A1-10-507
Included w/Front Cover Assy

5 Pulley Assy, Idler N3H1-15-930
6 Pulley, Idler N3H1-15-940B
Included w/Idler Pulley Assy

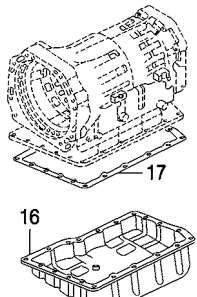
7 Filler Assy, Oil N3H4-10-D10D
8 Cap Assy, Oil Filler N3H4-10-250
Gskt, Oil Filler Cap (a) 8871-10-252
(a) Included w/Oil Filler Cap Assy

9 Valve, Solenoid (3) KL01-18-741
Hose, Vacuum (a) N.A.
Included w/Oil Filler Assy
(a) Cut to Fit

10 Cover Assy, Engine N3H3-13-13XD
11 Emblem L323-10-2D9
12 Bushing, Mtg (4) N3H1-13-323A
Included w/Engine Cover Assy

13 Pan Assy, Engine Oil N3H8-10-4AXB
14 Baffle, Oil Pan N3H1-10-40Y
15 Sensor, Oil Level N3H1-10-470A
Included w/Engine Oil Pan Assy

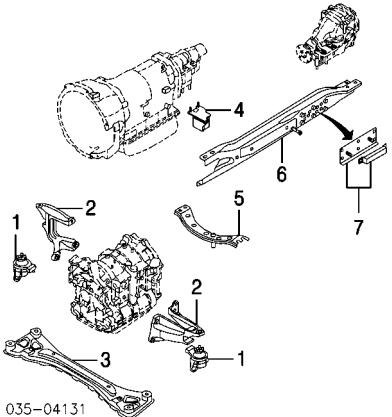
Sealant, Eng Oil Pan N.A.



035-04130

16 Pan, Trans Oil BW60-19-836
17 Gskt, Trans Oil Pan BW60-19-835

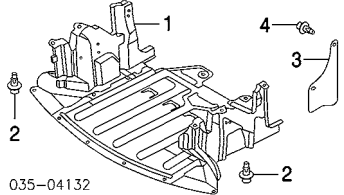
ENGINE/TRANS MOUNTS



035-04131

1 Mount, Engine R F151-39-040B L F151-39-050B
2 Brkt, Engine Mount R F151-39-021 L F151-39-031
3 Crossmember, Eng F151-34-H90
4 Damper, Trans Dynamic BW60-19-070A
5 Crossmember, Trans F152-56-H10
6 Beam, Support F151-39-710E
7 Damper, Dynamic F151-39-970C

ENGINE UNDER COVER

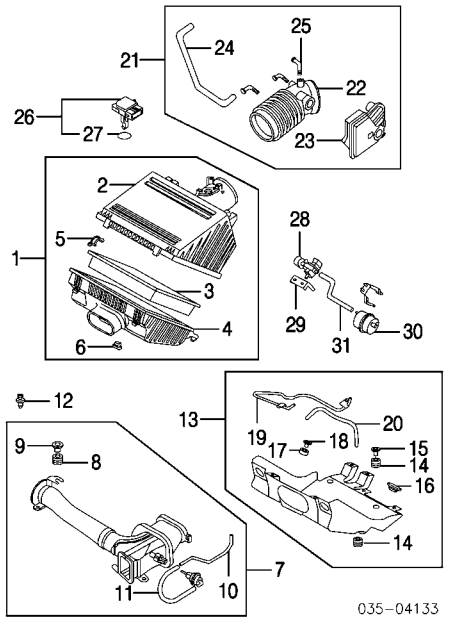


035-04132

1 Cover, Engine Under F151-56-110C
2 Clip, Under Cover BC1D-56-145
As Required
3 Shield, Splash R/L F151-56-321E

4 Clip, Splash Shield R/L BC1D-56-145
As Required

AIR CLEANER



035-04133

1 Cleaner Assy, Air N3H3-13-320F
Man Trans N3H1-13-320G
2 Cover, Air Cleaner Man Trans N3H3-13-201E Auto Trans N3H1-13-201G
3 Element, Air Cleaner N3H1-13-Z40
4 Case, Air Cleaner N3H1-13-202B
5 Clamp, Air Cleaner (2) B593-13-227
6 Grommet, Mtg R205-13-363
Included w/Air Cleaner Assy

7 Duct Assy, Air Inlet Man Trans N3H3-13-200C Auto Trans N3H1-13-200B
8 Grommet, Mtg S501-13-349
9 Spacer SLA1-13-321
10 Pipe, Vacuum Man Trans N3H3-20-410
11 Hose, Vacuum (a) N.A.
Man Trans
Included w/Air Inlet Duct Assy
(a) Cut to Fit

12 Clip, Mounting Man Trans (3) BC1D-56-145 Auto Trans (2) BC1D-56-145

13 Shield Assy, Heat Man Trans N3H3-13-3C0D Auto Trans N3H1-13-3C0B
14 Bushing, Mtg (3) FE51-13-363
15 Spacer, Bushing (2) FE51-13-329
16 Insulator (4) L813-13-363A
17 Grommet, Mtg (2) E367-13-208
18 Collar (2) E367-13-211
19 Pipe, Vacuum Man Trans N3H3-20-41XA
20 Hose, Vacuum Man Trans N.A.
Included w/Heat Shield Assy

21 Hose Assy, Outlet Man Trans-Serviced by Components N3H2-13-220D Auto Trans

22 Hose, Outlet Man Trans N3H1-13-221D Auto Trans N3H1-13-221D

23 Chamber, Resonator Man Trans N3H6-13-195A Auto Trans N3H2-13-195A

24 Tube, Vacuum Man Trans N3H1-20-342B Auto Trans N3H1-20-342B

25 Connector, Hose (3) Man Trans FEMJ-13-758 Auto Trans FEMJ-13-758
Included w/Outlet Hose Assy

26 Sensor Assy, Mass Air Flow ZL01-13-215R-00
27 O-Ring, Sensor ZL01-13-214
Included w/Mass Air Flow Sensor Assy

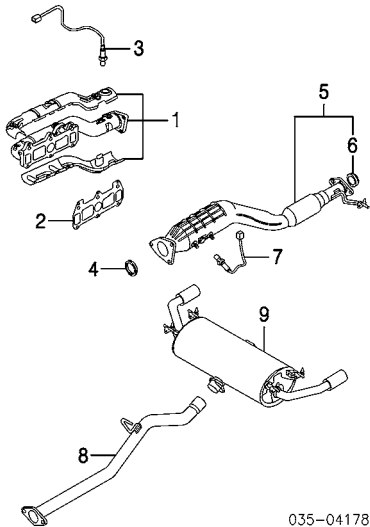
28 Valve, Solenoid Man Trans ZM03-18-741

29 Brkt, Solenoid Valve Man Trans N3H3-18-742

30 Chamber, Vacuum Man Trans BPD3-20-339

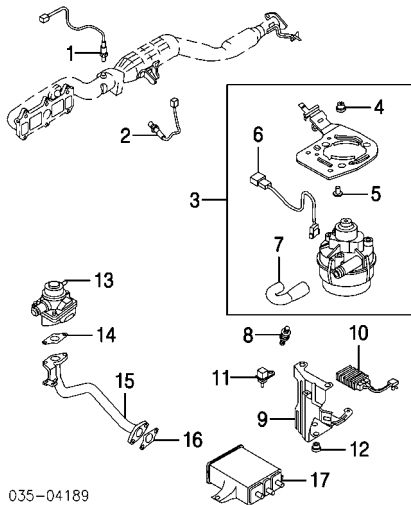
31 Hose, Vacuum N.A.
Cut to Fit

EXHAUST



- | | | |
|---|--|--------------|
| 1 | Manifold, Exhaust | N3H3-13-450C |
| 2 | Gasket, Manifold | N3H1-13-461B |
| 3 | Sensor, Front Oxygen-See Emission System Section | |
| 4 | Gasket, Flange | N3H1-40-305 |
| 5 | Converter Assy, Catalytic | N3H4-20-55XL |
| 6 | Gasket, Converter | L315-40-581 |
| | Included w/Catalytic Converter Assy | |
| 7 | Sensor, Rear Oxygen-See Emission System Section | |
| 8 | Pipe, Intermediate | N3H1-40-600B |
| 9 | Muffler | N3H1-40-100H |

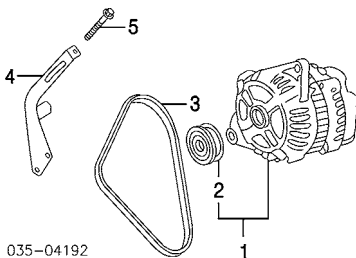
EMISSION SYSTEM



- | | | |
|-----------|---------------------------------|--------------|
| 1 | Sensor, Front Oxygen | |
| | Man Trans | N3H3-18-8G1A |
| | Auto Trans | N3H2-18-8G1B |
| 2 | Sensor, Rear Oxygen | |
| | Man Trans | N3H3-18-8B1B |
| | Auto Trans | N3H2-18-8B1C |
| 3 | Pump Assy, Air | N3H1-13-81XB |
| 4 | Insulator, Mounting¶ (3) | N3H2-13-363 |
| 5 | Spacer¶ (3) | N3H2-13-329 |
| 6 | Harness, Pump¶ | N3H2-18-051 |
| 7 | Hose, Air¶ | N3H1-20-751 |
| | ¶Included w/Air Pump Assy | |
| 8 | Mount, Pump | N3H1-13-363 |
| 9 | Brkt, Air Pump | N3H1-13-920 |
| 10 | Resistor | N3H1-18-831 |
| 11 | Sensor, Boost | KL47-18-211A |
| 12 | Insulator, Mounting (2) | N3H3-13-363A |
| 13 | Valve, Air Control | N3H1-13-990B |
| 14 | Gasket, Valve | N3H1-13-996 |
| 15 | Pipe, Air | N3H1-13-820A |
| 16 | Gasket, Pipe | |
| | Man Trans | N3H3-13-996 |
| | Auto Trans | N3H1-13-996 |
| 17 | Canister, Vapor | N3H4-13-970A |

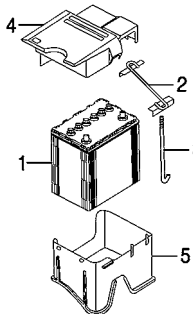
ELECTRICAL

ALTERNATOR



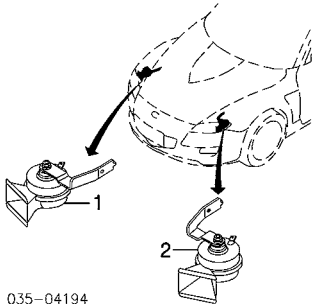
- | | | |
|---|---------------------------------|--------------|
| 1 | Alternator Assy | N3H1-18-300A |
| 2 | Pulley, Alternator | N3H1-18-W11 |
| | Included w/Alternator Assy | |
| 3 | Belt, Drive-See Cooling Section | |
| 4 | Brkt, Adjuster | N3H1-18-360A |
| 5 | Bolt, Adjuster | N390-15-966 |

BATTERY



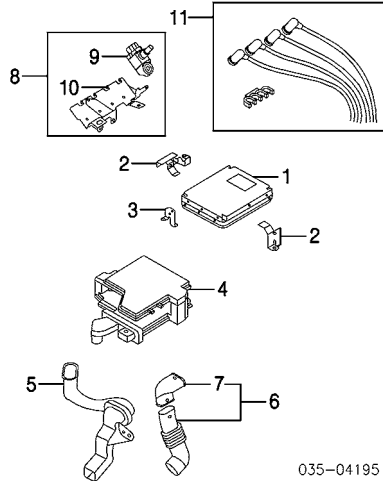
- | | | |
|---|---|--------------|
| 2 | Battery | N.A. |
| 2 | Hold-Down, Battery | H384-56-03XA |
| 3 | Bolt, Hold-Down (2) | 0259-54-292A |
| 4 | Cover, Upr Battery | N3H1-18-593D |
| 5 | Cover, Lwr Battery | N3H1-18-591D |
| 6 | Tray Assy, Battery | F151-56-040A |
| 7 | Brkt, Battery Tray | F151-56-047B |
| | ¶Included w/Battery Tray Assy | |
| 8 | Duct, Air | N3H1-18-596A |
| 9 | Clip, Duct (2) | GJ21-28-803 |
| | Cable, Positive-Serv'd w/Engine Harness | |
| | Cable, Negative-Serv'd w/Engine Harness | |
| | Harness, Engine | |
| | Man Trans | F151-67-070C |
| | Auto Trans | F154-67-070C |

HORN



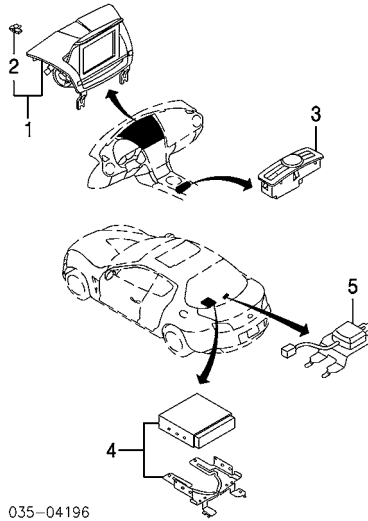
- | | | |
|---|-----------------|-------------|
| 1 | Horn, High Note | F151-66-78Y |
| 2 | Horn, Low Note | F151-66-79Y |

IGNITION



- | | | |
|----|--------------------------------------|---------------|
| 1 | Module, Powertrain Control | |
| | Man Trans | N322-18-881J |
| | Auto Trans | N321-18-881H |
| | Bracket, Module | |
| 2 | Side | R N3H1-18-885 |
| | | L N3H2-18-885 |
| 3 | Front | N3H1-18-883 |
| 4 | Case, Control Module | F151-F7-F21A |
| 5 | Duct, Right Air | N3H1-18-781B |
| 6 | Duct Assy, Left Air | N3H1-18-787A |
| 7 | Hose, Air | N3H1-18-783 |
| | <i>Included w/Left Air Duct Assy</i> | |
| 8 | Coil Assy, Ignition | N3H1-18-10XA |
| 9 | Coil, Ignition(4) | N3H1-18-100 |
| 10 | Bracket, Coil | N3H1-18-105 |
| | <i>Included w/Ignition Coil Assy</i> | |
| 11 | Wire Set, Ignition | N3H1-18-140A |

NAVIGATION SYSTEM



- | | | |
|---|---|--------------|
| 1 | Display Assy, Navigation | F151-66-DV0A |
| 2 | Clip, Spring (10) | B30D-64-345 |
| | <i>Included w/Navigation Display Assy</i> | |
| 3 | Control, Navigation | FE15-66-9L1 |
| 4 | Navigation Unit | FE01-66-DF0 |
| 5 | Antenna, GPS | F151-66-DY0 |

STARTER

Illustration Located in Next Column

- | | |
|------------|-------------|
| 1 Starter | |
| Man Trans | N3H1-18-400 |
| Auto Trans | N3H2-18-X65 |